

# Knit and natter's blanket coverage!



It's been plain and purl sailing for CCRA's knitters at St Richard's Hall this summer and autumn. They've been knitting with unremitting enthusiasm and a spattering of nattering, working on a project for Queen Elizabeth Hospital's neo-natal unit. They have produced woollen hats, incubator and cot blankets for premature and vulnerable babies and little knitted teddies for their Christmas gift boxes. Their efforts are part of the BLISS campaign to support 'babies born too soon, too small, too sick' (<http://bliss.org.uk>) and the results of their labours were warmly welcomed by staff at the hospital when they were delivered.

Tamara Gargasson, from the QE neo-natal unit, met CCRA chair Brenda Taggart earlier this year. Tamara said: 'They've done an outstanding job. Wonderful! We are indebted to them and I'm looking forward to seeing what else they will be doing.'



## THE WHITE SWAN

Now under new management, The White Swan, located in the heart of historical Charlton Village, is a family friendly community pub offering home cooked food, an ever changing vast selection of real ale from local brewries, along with weekly entertainment.

Why not come and enjoy it for yourself beside the roaring log fire, and cosy surroundings.

**Now accepting Christmas Bookings**

22 THE VILLAGE, CHARLTON, SE7 8UD | 020 3417 5996



### OPENING TIMES

**MONDAY**  
**SIX TO ELEVEN**

**TUESDAY - THURSDAY**  
**NOON TO ELEVEN**

**FRIDAY & SATURDAY**  
**NOON TO TWELVE**

**SUNDAY**  
**NOON TO ELEVEN**



# CHARLTON GRAPEVINE

VINTAGE 35 NOVEMBER 2015  
the newsletter of the Charlton Central Residents Association

## Christmas is coming!



Deep, sweet, crisp and even: our carol singers in full voice last Christmas. They will entertain at the social.

**T**his is the season to be jolly, so get along to CCRA's Christmas Social at St Richard's Hall on Saturday 5 December. Doors open at 4pm and there will be live music throughout the event from our very own band, SE7. There will be a range of interesting stalls, including locally produced gifts and decorations. Light refreshments including mulled wine, mince pies and samosas will be available at reasonable prices. Every year we raffle a grand hamper filled with seasonal goodies – well worth winning. Come along and support your friends and neighbours. At 6.30 pm you'll have a chance to join in some community carol singing – all your old favourites.

And if you like carol singing you can join us at the social or listen from the comfort of your own home.

### STOP PRESS

- ★ We're hoping to start regular 'playing out' sessions soon. Look out for a flyer in the near future with full details.
- ★ End of year means end of membership. See page 11 for details on how to renew for just £5.

Inside this bumper, 12-page colour issue of Grapevine are details of carol singing in the neighbourhood on Monday 14 and Thursday 17 December. Proceeds will go to a local good cause – full details available on the nights. Carol singers are invited back for some seasonal cheer at the end of the evening. Why not join us? (see page 11 for full details).

As you'll see as you read, CCRA has had a busy year and we're planning another action-packed 2016. Don't forget that we need your support so note the dates of coming events and join us!

### Season's greetings

I would like to wish everyone in Central Charlton a happy festive season and a healthy and prosperous

New Year.  
*MP Matthew Pennycook*



The Grapevine editorial team would like to wish all our readers a very happy Christmas

# Fond farewells as Len and Bev head north

Two of CCRA's most valued members are leaving Charlton and heading to Preston to be near their daughter. Len and Beverley Weir have lived in Elliscombe Road for 34 years and were founder members of the association. They remember clearly the first exploratory meeting at Dave and Elaine Picton's home in Wellington Gardens. During the association's eight years of existence, Len has been on the Management Committee and has been both Vice-Chair and Secretary. He was still attending meetings on behalf of CCRA earlier this month. Together they have worked tirelessly for the organisation not only on the committee but at many events and activities. They will both be sorely missed. Len is especially proud of setting up the Flower and Produce Show, guiding it from a fledgling exercise to a popular event. This year, the fourth show attracted several hundred entries. Len said: "I was keen to see CCRA build a village in the city and that's why I think we are unique. We have a strong social strand here, with our rolling programme of activities. These events are the glue that binds the association and its members together. I love Grapevine. It's a great

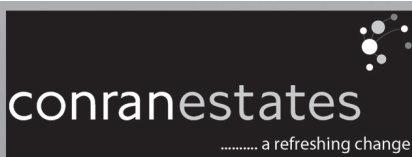
magazine and the physical embodiment of CCRA. Long may it continue."

At events Beverley has often been seen running the raffle, organising the drinks or using her persuasive powers to encourage others to join up. Bev said: "We are both sad to be leaving so many friends here in Charlton. But we'll be back now and then."

Brenda Taggart (Chair) said: "We send Len and Beverley our sincerest thanks for all they have done for CCRA. They will be remembered every year when we present the Weir Cup, our first trophy to be awarded at the Flower and Produce Show. We will all miss them so much."



Len and Bev Weir are off to Preston next month



## Charlton's Leading Estate Agent

SALES • LETTINGS • PROPERTY MANAGEMENT



0208 293 0454



[charlton@conranestates.co.uk](mailto:charlton@conranestates.co.uk)

[conranestates.co.uk](http://conranestates.co.uk)



# The air that we breathe

**R**esidents at the AGM were fortunate to hear a national authority on the subject of air quality, Dr. Ian Mudway, talking on the impact of air pollution in London. He commended CCRA for undertaking its own survey within our area and said the impact of pollution from traffic shortens everyone's life. A recent report in a national newspaper suggested that high levels of air pollution could increase the risk of brain damage and small stroke, linked to dementia.

The greatest effect is on young children because their lung capacity is smaller than that of adults and thus the proportion of polluted air in their bodies is greater. Dr. Mudway's recent research involving 2,400 London school children shows that traffic pollution stops children's lungs growing properly. By 8-9 years old, children from the most polluted areas have 5 to 10 per cent less lung capacity that may never be regained.

## ...and tell your local MP what your views are

At Charlton Society's Open AGM our MP Matthew Pennycook spoke with knowledge and conviction about the necessity of improving air quality in Greenwich.

He is hoping to establish an all party committee on the issue which he hopes to chair. He said that in general MPs' correspondence from constituents does not reflect the extent of concerns on this vital matter. That includes his constituency.

If you have concerns about the quality of the air we breathe in Greenwich, let him know so that he can represent your views.

Contact him by email on [matthew.pennycook.mp@parliament.uk](mailto:matthew.pennycook.mp@parliament.uk) or by surface mail at Matthew Pennycook MP House of Commons, London, SW1A 0AA.

## Silvertown Yes or No?

TfL's consultation on a new river crossing between the Greenwich peninsula and Silvertown finishes on 29th November.

Amenity groups have been encouraged to ask their members to respond to the consultation. CCRA undertook its own survey, seeking a response to the question: Do you support the current TfL proposal for the Silvertown Tunnel Crossing?

Of the 196 emails sent out to members 37 people responded (a response rate of 18.8%). Of those 29% (11 responses) supported the construction of the Silvertown Tunnel. 70% (26 responses) voted against building the tunnel.

Watch this space for further information on the results of the TfL consultation.

**The Old Cottage Coffee Shop**  
*A traditional tea shop serving high quality tea, coffee & snacks*  
*Open everyday from 10am in Charlton Park*



*Closes 4pm in winter and 5pm in summer*

**TUDOR TOUCH**  
EST. 1976  
SHUTTERS AND BLINDS AND MORE



**LONDON SHOWROOM**  
26 The Village, London, SE7 8UD  
020 8319 4444  
[www.tudortouch.com](http://www.tudortouch.com) | [sales@tudortouch.com](mailto:sales@tudortouch.com)

# Planning to get it right

**E**ver wondered how major developments like retail parks and road schemes are designed, and thought “I could do better”? Then you’re not alone. Charlton Riverside Action Group (CRAG) was formed several years ago to represent the local community on how our riverside area should develop. A public meeting generated a lot of interest and aimed to stimulate engagement with RGB.

When planning permission was given for redevelopment of the site previously occupied by Wickes and various furniture stores CRAG spawned the Charlton Gallions Stakeholders’ Group (CGSG) to ensure local interests were represented. Made up of people from local community organisations (CCRA, Charlton Society, etc, and the council) it acted as the interface with the new retail park developers, ploughing through hundreds of issues and decisions. So next time you visit Sainsbury’s or M&S, or sit with your Costa coffee in the “pod”, enjoy the extensive planting including maturing trees, the more attractive gabion walling (large stones inside a wire cage) instead of bare concrete, or note that the car park has designated pedestrian routes right across. Were it not for this group, “Charlton” wouldn’t even be in the name!



## Buying or selling?

### An expert advises

How will these developments affect residents wishing to buy, sell or rent in the area? We asked Michael John of Conran Estates what advice he would give prospective sellers. He said: “Focus on presentation. Revamp the kitchen and bathroom, and make sure that the décor and garden are well presented. Look at the front of your house; we call this improving the ‘doorstep appeal’. Before doing any of this, give me a call on 0208 293 0454. I am always happy to advise.” Generally Michael sees the greatest demand from first time buyers wanting one and two bedroom flats, as well as traditional family homes.

As a result of rising London house prices, many residents, especially families with young children, extend their houses rather than move. Many loft conversions do not require planning permission and can increase the property value. One effect of this is that neighbours stay longer, which helps build a friendly community.

As for the rental market there are now more private landlords than social ones. It is important to check the intentions of your private landlord before renting, to avoid the frustration of needing to move in a year or two. It is not compulsory for landlords to register, though many do it voluntarily through, for example, the National Landlord Association ([www.landlords.org.uk](http://www.landlords.org.uk)) that requires adherence to a code of practice.

It is hard to predict what impact the Charlton Riverside development will have on our area. As yet the council has not produced an infrastructure plan. CCRA’s planning group is talking to RGB to ensure that potential negative impact is minimised.

## IKEA update

Since IKEA took over the Millennium Retail Park in September a start has been made on securing the site – with 24-hour CCTV and hoarding. They have established a link with conservation volunteers (currently maintaining the Greenwich Peninsula Ecology Park) who will help maintain the ecology site “for the foreseeable future”. IKEA Greenwich project manager, Karen Sutton says the full planning application will be submitted in Autumn 2016.

# CCRA's eight great years!

**C**CCRA's eighth AGM was an opportunity to celebrate the work of the Association so far. Chair of the Association, Brenda Taggart reflected on some notable activities including outstanding editions of Grapevine, many social events (Quiz nights, Election Hustings, Open Gardens, Community Day, Flower and Produce Show, Big Lunch etc.) and sterling work by the Planning and Community Safety Action Groups. The Interest Groups (Singing, Band, Local History, Walking, Cycling, Reading and Knitting) are all testament to a thriving association.

The Association had been active in liaising with councillors and championing issues such as traffic management, air quality, noise pollution, social isolation, inappropriate development; freedom of information requests, RBG's archiving policies and much more.

Elections: Chair (Brenda Taggart), Vice-Chair (Martina Keating), Secretary (Jane Ruthven) and Treasurer (David Gayther) with Duncan Alexander remaining as Membership Secretary. The Management Committee said farewell to Baljinder Dhesi, Brian Kriss and Len Weir, who were thanked for their hard work over many years. The 2016 Committee are Wendy Barrington, Barbara Buchan, Jas Dhesi, Annie Galloway, Chris Harrison, Sarah Hornsey, Joy Ogden, Linda Pound, Malcolm Ruthven, Liz Somerville, Peter Somerville and John Tidy.

## New role for Jane

I have lived in Elliscombe Road for more than 30 years. Our two children were born and brought up here. What a little gem of an area I discovered all those years ago.

I left work last year and thought it was time to involve myself more meaningfully in the community, and what better place to start than CCRA! I have been a member since its inception, but only became a member of the Management Committee last year. I am impressed with the professional way CCRA is run and by the devotion of my fellow committee members. We are lucky to live in one of London's villages where community members look out for each other and take an active role in the issues which affect our lives. As the new secretary, I intend to continue the brilliant work of my predecessor, Jas Dhesi, and to help CCRA go from strength to strength.

## Craft show is a record breaker

**O**ur fourth annual Flower, Produce and Craft Show was held on 12 September. This year saw a record number of entries, including all of the children from Fossdene School. From over 300 entries, fifty children had their paintings, models, plants and craft items taken through to the final round of judging. The schoolchildren offered over 50 entries in each of the following categories: model of a minibeast; minibeast hats; painting buildings in the style of LS Lowry; 3D junk models; puppets; poems; planting and growing chillies; planting and growing sunflowers; making jewellery; paintings of Charlton landmarks. CCRA is grateful to the children, staff, deputy head and head teacher of Fossdene for all their excellent entries and hard work. Thanks as ever to Blackheath and Greenwich Women's Institute for their expert judging. For a full list of all prizewinners, please visit our website - <http://www.charltonresidents.org/groups/flower-produce-show/>.

Why not start planning your entries for the 2016 show? It's never too early to knit that item, bottle that chutney or get planting!

**The German Master Baker will be visiting  
Wellington Gardens (opposite No.84) in his  
mobile shop**



**Alternate Saturdays between 08.45—9.10am**





# Uniting for a safer community

## A FESTIVE SAFETY CAROL FROM COMMUNITY SAFETY GROUP MEMBERS

While neighbours watch their locks by night  
All bolted safe and sound  
An officer of the law came by  
And shone his torch around

Fear not said he now go to bed  
And close your drapes and blind  
So nobody can see your gifts  
And pilfer what they find

To you in Charlton town this year  
We faithfully remind  
Don't leave your gift buys in the car  
For this will be a sign

That TV box outside they'll find  
To burglars' view displayed  
So wrap it up in bin liners  
Or in the dustbin lay

Be vigilant, don't walk on by  
And in the streets be peace  
Goodwill henceforth to women and men  
Watch out and never cease

**C**RA is working to create a safer friendlier place in which our community can thrive. We have all been relieved over the last year to see the decline in local crime rates. But there has been a worrying increase in a range of scams often targeting elderly or vulnerable residents. Whether they are trying to sell carpets, do building work or obtain your bank details these heartless villains can be very convincing. Never part with personal details on the doorstep or over the phone. Remember if something sounds too good to be true it probably is. If you suspect a rogue trader or a scammer or need some advice RBG's Trading Standards would love to hear from you. Contact them on 0208 921 8223 or email [tradingstandards@royalgreenwich.gov.uk](mailto:tradingstandards@royalgreenwich.gov.uk)

## MP's campaign for better trains

Matthew Pennycook, our local MP, is leading a fight for improved train services. He told Grapevine: "I receive complaints about late, cancelled or overcrowded Southeastern trains on an almost daily basis. In our rapidly growing corner of London, which already struggles with appalling road congestion and pollution, a sustainable local transport system is essential.

I am convinced that our local train services could be more effectively run. That is why I pledged during the general election to campaign for the incorporation of local train services into TfL's successful London Overground network if elected.

There are good signs that support for devolving control of local rail franchise is growing. On 16 October, the Transport Committee of the Greater London Assembly (GLA) published a report recommending further devolution of train services from the Department for Transport to TfL.

The report supports my assertion that passengers would see improvements – higher capacity, better reliability, integrated and cheaper fares and better accessibility – if Southeastern metro services to Dartford and Sevenoaks were to be transferred to TfL when the franchise is re-let in 2018.

Now we just need to convince the Government to make the change. I raised the issue on the floor of the House on 5 November and will continue to press for the change in the months and years ahead".



**Osteopathy and Deep Tissue  
Massage Home Visit Service**

**Have a treatment at a time and  
place that suits you.**

**To book an appointment please  
call Mark on 07903 714115**

**[www.osteopathathome.co.uk](http://www.osteopathathome.co.uk)**

# Cheque mates!

Bill Woledge, Store Manager of Sainsbury's Charlton Riverside presents a cheque for £200 to CCRA's Sarah Roseblade and John Tidy in the café of the new store. The funds will help to cover the cost of hiring St. Richard's Hall for CCRA's activities



## Bin there - done that

On Thursday 29 October 2015 CCRA representatives Martina Keating and Brenda Taggart gave evidence to RBG's Overview and Scrutiny Panel on Community Safety and the Environment. This was to make comments on the recent review of the Cleansweep services. The meeting was chaired by Cllr Gary Parker and was well attended by a range of community and resident's groups including 'Wonderful Woolwich'. CCRA acknowledged the things the borough does well: emphasis on recycling, support for our Community Day etc. but left the Panel in no doubt that there were areas of service that need immediate improvements. The main items of concern were the lack of enforcement for littering, fly-tipping etc in the Charlton area (backed up by the Council's own statistics), lack of bins in strategic places (near catering outlets) and the mismatch between waste collection and street cleaning. The latter is particularly annoying as dropped waste can be blown around for a days before being cleared up. CCRA will continue to monitor performance of this vital council service. If you want to report dumped rubbish, or any other street hazard (loose paving, broken street light etc.) go to <http://greenwich.fixmystreet.com/>

## It's the little things...

It's sometimes the little things that make a difference to a neighbourhood. Those small acts of kindness that bring a smile to everyone's faces. So hats off to good neighbours in Elliscombe and Delafield who have taken the trouble to plant up the space at the bottom of trees outside their houses. Now is a good time for bulb planting. If you have a similar public space near you, perhaps you could do some planting – bringing a smile to neighbours' faces next Spring.

## What's On at Charlton House in December

### Global Fusion Music & Arts

presents Wassail Night with  
Martin Carthy and Murrigan  
Friday 11 December 7pm

Tickets £8 from [www.wegotickets.com](http://www.wegotickets.com) or on the door

### Royal Greenwich Heritage Trust

presents Children's Christmas Workshops  
Monday 21 December at Charlton House  
entrance £1.50

Check the website for more details [www.charlton-house.org](http://www.charlton-house.org) or call 0208 8563951

### Postcards exhibition in the Long Gallery

2 Nov until 2 April 2016

Chosen from thousands in the collections, this exhibition displays a selection featuring images from in and around the borough. Please call ahead to check times 0208 8563951

## IN MEMORIAM

Our thoughts are with the family and friends of Esther Norris of Delafield Road, a long-standing member of CCRA who died recently.

Also, sad to record the passing of Sheila Spice, popular resident of Elliscombe Road who died in hospital earlier this month. Sheila had lived in the area for more than 50 years and will be greatly missed by her friends, neighbours and family.



# Community interest groups

## Book Group

Our Book Group continues to thrive with around a dozen members who have just gamely tackled the Booker Prize Shortlist of six books representing fiction at its finest.... We met on the evening of the announcement of the winner to vote for the 'people's choice' - well, the CCRA Book Group Choice at least! On this occasion, we were wrong, and none of us had tipped A Brief History of Seven Killings by Marlon James to win. Our members argued passionately for the one that got away - A Little Life by Hanya Yanagihara - and we'll be discussing this book further in November. After that, we have a social evening at the White Swan in the Village on 9 December, do come along if you are interested in joining the Group. Contact zoe31well@hotmail.com

## Walking Group

The Walking Group has been especially fortunate recently with splendid weather - often despite forecasts to the contrary! August found us walking through some hidden parts of Eltham. In September, we followed the River Shuttle to Hall Place. In October we went to the Olympic Park in Stratford, while our



November walk took us to the City of London: from Pudding Lane to Pye Corner, with amazing views of St Paul's Cathedral from New Change.

We welcome anyone who wishes to join us on the first Sunday of each month at 10.30 (winter) or 10.00 (summer), usually starting from Charlton Station. We especially like regular walkers to suggest a favourite walk so that all interests and levels of walk can be accommodated. For more information please visit the CCRA website or email Jill at: jillmo@btinternet.com

## Singing Group

The group meets once a fortnight, alternately on Mondays and Thursdays and we are getting ready to perform at the CCRA Christmas Social on 5 December. We will also be going out carol singing (see front page). We are always happy to welcome new members, whatever your level of experience. Although we do give occasional performances, the group is really about singing for our own pleasure, and there's no pressure to attend every session. If you are interested in joining, please contact Chris on 020 8858 7377.

## Music Group ('SE7')

The group continues to meet fortnightly on Mondays, and we have continued our monthly performances at Cattleya. We will also be providing entertainment at the CCRA Christmas Social on 5 December. We are always interested in gaining new members and would especially like to hear from players of melody instruments - strings, woodwind or brass. If you are interested in joining the group, whatever your level of experience or expertise, please contact Chris on 020 8858 7377.

## Local history group

Anyone interested in joining this group should contact jillmo@btinternet.com.

## Knit and natter.... and more?

Knit and natter meet once a month at St. Richard's Hall on the last Tuesday of the month from 2-4 pm. We're keen to open these daytime sessions to those of you who don't like knitting but would welcome a bit of a chat, a cup of tea or coffee and maybe a piece of cake. If you'd like to play chess or cards or have another interest you'd like to share why not come along and join us. You can just pop in or email events@charltonresidents.org.

## TARINI YOGA

Charlton House SE7 8RE

MONDAY	WEDNESDAY	THURSDAY
6:30pm - 8pm Yin/Yang Yoga	6pm - 7:30pm Hatha Yoga	6:30pm - 8pm Yin Yoga & Gong

FRIDAY 4th DECEMBER  
7:30pm - 9:30pm  
Yin Yoga & Gong Bath

Booking essential  
Email tariniyoga@yahoo.co.uk  
07411 116911



## Charlton Community Gardens

Everyone who uses Charlton Station takes great pleasure in passing the thriving garden. But

local residents are not the only ones who notice.

The RHS It's Your Neighbourhood scheme gave our garden an "Outstanding" rating. Last year was the first formal evaluation and we've jumped from the second level, "Developing" awarded then to the top level (level 5). That's quite an achievement.

The success is due to all the support received-- the labours of the volunteers on the Watering Rota and at the Garden Parties, the financial backing of people who buy from our plant sales, make donations for produce and from the local businesses who have sponsored the raised beds: Cattleya, Tudor Blinds, Headstart IT and Conrans.

To celebrate another successful year you are invited to join Charlton Community Gardens for a celebratory mince pie and a drink on Monday evening, 7 December, from 8 - 9 at St Richards Hall. Come along – everyone is welcome.

## Singing together

CCRA members are closely involved in 'Singing Together' sessions at the Public Hall, Market Street, Woolwich on the second Monday of each month for carers and their cared for. The sessions are organised by volunteers from Dementia Carers (Greenwich & Bexley), including CCRA member Jill Austen and the singing is led by Chris Harrison. The sessions start with 'meet and greet' over a cuppa followed by singing your old favourites until around noon. The support network run other sessions. For more information please ring Jenni White on 07712 033782 or [www.dementiacarersgreenwich.btck.co.uk](http://www.dementiacarersgreenwich.btck.co.uk).

## Skateboard Update

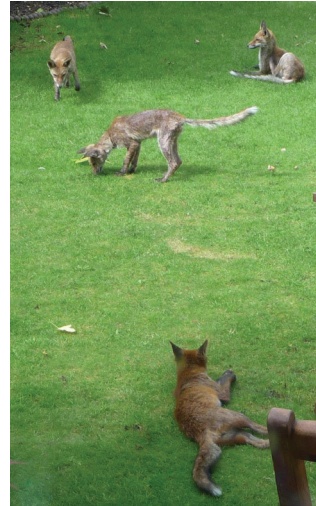
Over the next few months RBG are holding a series of Skate park Stakeholders meetings to consider the next stage of its plans to build a skate park in Charlton Park. A petition against the facility was discussed at the last Council meeting on 28 October and an online petition with 1023 signatures in favour has been received by the council. It is expected that the full planning application will be considered in January. If you would like to know more about the development contact Amy London on 0208 921 5618 or [amy.london@royalgreenwich.gov](mailto:amy.london@royalgreenwich.gov).

## Letters



### Dear Grapevine,

This is a bug bear of mine but I wanted to explain how anti-social and unhygienic it is to feed foxes.



I've seen the foxes wait in the garden and respond as soon as they hear a back door open. I am a lover of nature but unfortunately this close interaction with our urban wildlife causes a big problem. The foxes take the food away to eat elsewhere and leave half-eaten food, excrement, urine and vomit in other people's gardens!

The photo, above, shows my problem clearly and this was a quiet day in my garden. I have had as many as six visitors at a time eating their lunch and leaving their foul smelling and unpleasant aftermath. You can imagine the mess I regularly have to clear up. Please spare a thought for your neighbours and next time you want to feed our local wildlife, put up a bird feeder for the blue tits and robins instead!

**Name and address supplied.**



Highest purity

### Calabrian Citrus Bergamot

- Naturally, improves cholesterol levels
- Reduces blood pressure
- Reduces blood sugars
- Effective in treating fatty liver

Visit [www.bergamet.co.uk](http://www.bergamet.co.uk) and enter the promo code 'BERGAMETNEW' to receive 10% off your first order





# *How happy is my valley?*

## **...A view from the terraces**

**T**here comes a time in every season when even the most optimistic Charlton fan asks: “When will the team push the self-destruct button?”

This year it came earlier than most and made a mockery of my bold predictions in my last column when I said head coach Guy Luzon and his squad looked set for the playoffs. Mind you, then they were playing out of their socks with a verve and energy that led to my somewhat hasty forecast. Since August the freefall slide to relegation has been arguably the most disastrous ever. Certainly the results from the last five games before we took on Sheffield Wednesday at home on 7 November proved the point by being our worst since 1922! For the record (and for fans who don't want to weep, look away now) we failed to score in five consecutive games; we lost eleven out of 12 games and hadn't won since August 22.

### **Protest**

It was sufficiently bad for supporters to stage a pre-match protest on 7 November. And it was sufficiently bad for owner Roland Duchatelet to sack his head coach, Guy Luzon. His choice of successor makes for interesting reading. The new “acting” head coach is Karel Fraeye. Who he? I hear you ask. It's the same question I posed when I heard the news. No prizes for guessing he's a Duchatelet “network” choice. He was previously managing VW Hamme, that scintillating side from the third tier of the Belgian league where they are currently 16th. More importantly, does he have any experience in the English league? Curiouser and curiouser, Mm. Fraeye, 37, has already served time at the Valley! He was assistant to Jose Riga, (another Duchatelet networker) the man who hauled us back from the brink of relegation in the 2013/14 season. Riga's reward for that minor miracle was to be sacked. He subsequently went to Blackpool where he lost his job again in a maelstrom of mismanagement that even dwarfed Charlton's problems. Beyond this I know little about his managing pedigree. His first two games in charge did little to lift the gloom as they both ended in defeat. But suddenly, against all the odds we beat Sheffield 3 – 1

at the Valley in a superb display of soccer. Back was the commitment, dedication and inventiveness that had characterised our early season form. Whether we can keep it up remains to be seen. As I write there are still more than 30 games to be played so anything is possible.

### **Bemused**

Iconic skipper Johnnie Jackson, returning after months on the sidelines through injury, set the pace against Sheffield and scored the first goal. He was one of the last to score thirteen matches previously when he came on as a late sub and headed home with literally his first touch of the ball. He was also bemused by some of Luzon's tactics and felt that the team had lost their way. With new leadership, he had high hopes of a resurgence in Charlton form.

Chief Executive Katrien Meire told disgruntled fans at a Forum at the Valley that the ultimate aim is to make Charlton a team that succeeds in the Championship and hopefully earns promotion. She said they had abandoned the “network” scheme where players from any of Duchatelet's sides can be drafted in, and they now appoint on merit.

This season they have invested £9 million in players and have just taken on loan till the end of the season, former Bolton striker Ricardo Vaz Te. The Portuguese player scored 24 goals in his last season in England, so there are high hopes for him.

Great emphasis is placed on the Academy and no less than five young players have appeared in the first eleven this season. The latest is youth team hopeful Ademola Lookman who came on as sub against Sheffield and really looked the part. Just one season ago he was playing Sunday league soccer before joining the Academy when he has impressed sufficiently to earn a place in the first team. Jordan Cousins is a talented regular and Morgan Fox has already been part of the Welsh national side.

This is one of the best sides ever to line up at the Valley and we should all be expecting better things. There is no reason why we cannot bounce back. It would at least give credence to my positive early season prediction. COYR's!

## Dates for your diary

**Saturday 5 December**

**Christmas Social**

**4-7 pm St Richards Hall, Swallowfield Road**

**See page 1**

**Monday 7 December**

**Charlton Community Gardens**

**8-9 pm St Richards Hall, Swallowfield Road**

**See pages 8&9**

**Monday 14 December**

**Thursday 17 December**

**Carol Singing from 6.45pm**

**Meet up at 26 Wellington Gardens**

**See page 1 for more details.**

**2016 dates to be confirmed**

**Check the website for details ([charltonresidents.org](http://charltonresidents.org))**

**Saturday 30 January**

**Quiz night**

**7.30 at St Richard's Hall**

## Membership: It's time to renew

As the year end approaches, so does your glorious year of CCRA membership. On 31 December you'll be cast into the cold, dark world of the un-membered. We normally have a membership drive during January, but you can avoid any nagging feelings of insecurity by renewing now. Unbelievably, it's still £5. If you're an existing member, just put a fiver (or a cheque to CCRA) in an envelope with your name and address and deliver it to 7 Elliscombe Road or 49 Delafield Road. If you're joining afresh, you can find a membership form at <http://www.charltonresidents.org/membership/>. If you'd like to pay online, by Standing Order, or have any other question, it's [membership@charltonresidents.org](mailto:membership@charltonresidents.org)  
PS: You should receive occasional emails from us. Recent ones have reminded you of the quiz night and canvassed opinion on the Silvertown Tunnel. If you're not receiving them, please check your spam or junk folders. Apparently iphones may put CCRA emails in a promotions folder – so check there too. If you have more than one email address or have recently changed yours it might be a good idea to email us so that we can check we have your details correct.



## What's new in Charlton Village

### The Village Greengrocer

2 The Village, London, SE7 8UD

Open Mon-Sat 9am-7pm and Sun 10-4pm

Fresh fruit, vegetables, organic bread and more.

Fine selection of Christmas trees delivered to your living room!

Free delivery on all orders over £10

tel: 0208 3198611 email: [info@fclcatering.co.uk](mailto:info@fclcatering.co.uk)

### Tudor Rosette Florist

4 The Village, London SE7 8UD

For Christmas gifts, table decorations, door wreaths and all your festive flower needs!

tel: 0208 8564631 email: [tudorrosetteflorist.co.uk](mailto:tudorrosetteflorist.co.uk) [www.tudorrosetteflorist.co.uk](http://www.tudorrosetteflorist.co.uk)

### Gentlemens Fitting Room

1 The Village, London, SE7 8UG

Come and visit our refurbished premises in Charlton Village

Stylish Suits for Gentlemen

tel: 0203 3699007 email: [info@gentlemensfittingroom.co.uk](mailto:info@gentlemensfittingroom.co.uk)

### iCARE OPTICAL

16 The Village, London, SE7 8UD

Free sight test appointments available in December

Wide range of designer frames available at our new practice in Charlton Village.

tel: 0208 8566034 email: [icareoptical.charlton@yahoo.com](mailto:icareoptical.charlton@yahoo.com) [www.ukicareoptical.com](http://www.ukicareoptical.com)

*Grapevine* reaches more than 1,000 homes and retail outlets in our designated area and beyond. To advertise, contact [grapevine@charltonresidents.org](mailto:grapevine@charltonresidents.org). Rates for individuals and small businesses: Small ads up to 15 words plus contact details cost £10 for 1 issue or £30 for 4 issues Panel ads single column 8cmx8cm cost £40 for 1-4 issues or £35 for 5+. Other sizes please enquire.

Comments, feedback, queries or material for the next edition of *Grapevine* should be emailed to: [grapevine@charltonresidents.org](mailto:grapevine@charltonresidents.org) by Monday, 18 January. Alternatively, phone Joy Ogden on 0208 293 3034 or Bob Smith on 0208 853 2697