

## CHEERS! Pub landlord Trev scoops top award

Grapevine raises a toast to Elliscombe Road entrepreneur Trevor Puddifoot whose River Ale House on Woolwich Road is South East London Pub of the Year 2019.

This award is bestowed by members of the national organisation, the Campaign for Real Ale. Competition is fierce and the top spot is a tribute to the hard work and dedication that Trevor has put into his micropub. And the icing on the cake is that the pub has also won CAMRA's cider pub of the year as well!

The Society for the Preservation of Beers from the Wood, another national beer consumer organisation, also chose the River Ale House as its London Pub of the Year. They celebrated that honour on 16 January. It's very much a case of small is beautiful at the River Ale House.

The premises are a converted shop, which Trevor owned and ran as a lingerie outlet for some years. The front room has been turned into the main bar and the room at the back, which was the storage area, is now a second smaller drinking space.

Beers come from small and microbreweries around the country and there can be as many as ten choices. To help you choose one, Trevor provides menus with tasting notes and beer descriptions. There is a large selection of gins and a small carefully selected wine list.

There are bar snacks, including traditional pickled eggs. For aficionados there is a selection of Belgian, canned and bottled beers and lager-style continental beers.

What made Trev swap lingerie for lager and bras for beers?

He says: "I started an office supplies business with two partners and that eventually came down just to me. One evening my wife Tracy mentioned that you couldn't get



decent lingerie anywhere round here, so I thought I'd give it a go and it turned out well.

"But with the advent of online sales business slowed down. It ran for ten years and I was thinking it was time for a change and I saw a piece in a local paper about the Long Pond micropub in Eltham and thought it looked like an interesting challenge.

"I went to have a look and decided it was just what I wanted to do. So I turned my shop and premises into the River Ale House in 2017 and have never looked back."

With seven days a week opening Trevor, 66, is always on the go, but he enjoys keeping occupied. His busiest day of all was when Charlton played fellow promotion candidates Sunderland. Fans from both sides poured in before the game and came back afterwards. "There was a great atmosphere," recalls Trevor. We were so busy I never looked up and eventually one of my staff told me that the queue for service went right out the door and some people just gave up waiting."

Does Trevor enjoy being behind the bar? "I love it. I've always been a real ale fan and I enjoy meeting people and chatting to them. I like to create an air of respectful irreverence."

The River Ale House now has a chance to be selected for CAMRA's London pub of the Year, an award based on judging by experts. In the meantime the presentation of his new accolade will be made in June.

**STOP PRESS** Open Gardens Sunday  
19 May 2019 – This is your chance to enjoy a neighbour's garden and, perhaps, to share yours. In the days running up to this event, check social media, local noticeboards and CCRA's website for details of gardens to be opened. If you would like to open your garden email [events@charltonresidents.net](mailto:events@charltonresidents.net). Please note that this is a members' only event. For membership details see page 3.

**Saturday 6 July 2019 is CCRA's Community Day**

There is such a thing as a free lunch! Everyone who volunteers to help with cleaning and greening in the neighbourhood is invited for lunch. Full details and programme for the day in the next Grapevine

# Riverside United?

London Mayor Sadiq Khan's decision to turn down developer Rockwell's plan for 771 homes on Charlton Riverside in a series of high-rise blocks has galvanised communities across Charlton to work with local councillors more closely than ever before to ensure our riverside is developed in line with Greenwich Council's plan.

## Mixed use

This includes predominantly low and medium rise housing in a mixed-use community. CCRA has played a significant role in delivering this result: credit goes to David Gayther, from our planning group, who has led our campaign from the start.

The Mayor's decision has huge significance for Charlton as developers line up to share in the redesign of Charlton Riverside.

They have produced initial plans

in the expectation that Rockwell would be approved. They may now have to think again since Sadiq Khan told Rockwell: "Go back to the drawing board." We hope they will do so. There are currently three major proposals on the drawing board:

● **Komoto Group** – plans for five blocks containing 500 homes at Flint Glass Wharf, just upstream from the Thames Barrier, on the riverfront. Their planning application is in two parts, seeking full approval for 146 homes in two blocks, and outline permission for the rest.

● **Hyde Housing Association** – wants to build up to 1000 homes on four sites over the next eight years. One site is on the riverside further upstream from Komoto's site and three are close by.

● **Westminster Estate /U&I** – plans for 500 homes and 800 new jobs on Bowater Road, once occupied by

Siemen's, which is at the Woolwich end of the Charlton Riverside site, not on the riverfront.

## New plans

Rockwell could still appeal or return with new plans. Whatever happens, there will be substantial development on the riverside that will change the shape of Charlton. The Rockwell ruling gives us the chance to influence these developments for the better.

The Mayor stressed the need for local people to be more involved in local planning, and for developers to include local views much more seriously from the start.

We are looking at ways of getting local people more actively involved, through ideas such as a new neighbourhood forum.

■ If you are interested, contact: [planning@charltonresidents.net](mailto:planning@charltonresidents.net)

# FEE FREE INDEPENDENT MORTGAGE ADVICE

t 020 8528 2251

e [hello@conranmortgages.co.uk](mailto:hello@conranmortgages.co.uk)

w [conranmortgages.co.uk](http://conranmortgages.co.uk)

conran  
mortgages

MORTGAGE

Expert mortgage advice:  
online | on the phone | or in our local office

Your home may be repossessed if you do not keep up repayments on a mortgage or any debt secured on it.

Conran mortgages is a trading style of Charles Conran Financial Services Ltd which is authorised and regulated by the Financial Conduct Authority and is on the Financial Services Register (312764).  
Registered in England No: 03734618. Registered office: 221 Greenwich High Road, Greenwich, London SE10 8NB

# Beware! New emission zone is now in operation

The ultra low emission zone (ULEZ) started in central London on 8 April, covering the same area as the congestion charge but operating 24 hours a day, 7 days a week. The daily charge is £12.50 a day for old and polluting vehicles, including cars, motorcycles and vans up to 3.5 tonnes. For heavier lorries, buses and coaches over 5 tonnes the charge is £100 a day!

A rough guide to who is exempt is as follow: Petrol vehicles registered with the DVLA after 2005, Diesels after September 2015, and Electric cars. But to be certain whether your car is exempt or not check at <https://tfl.gov/modes/driving/ultra-low-emission-zone/vrm-checker-ulez>

TfL is claiming that 'we will see harmful NOx (Nitrogen Oxides) road transport emissions reduce by 45% in its first year'. Presumably this means in the congestion charge area. But because it discourages polluting vehicles from using central London at weekends and overnight it may help improve air quality over a wider area.

It is planned to extend the ULEZ to everywhere inside the North and South Circular roads from October 2021. And that means us. So after that, if you have a non – exempt car, it's £12.50 a day.

Alongside the introduction of the new Zone, the Mayor's office is developing schemes to encourage scrapping old and diesel vehicles and encourage walking, cycling and the use of public transport. As they come on stream, you can get details on the TfL website.

# They're at the Hub of the community!

Over 55 and still active? Want an exercise class? Want to play some fun games? Want to join a choir? Want to meet people and make new friends? Then read on ... members of CCRA recently attended the launch of Charlton Athletic Community Trust's Extra Time Hub and had a great morning. With over 50 people attending each week these friendly meetings are for the semi/retired and are on our doorstep.

There is singing, an exercise class, table tennis, short matt bowls, bingo and much more and at £3 per session (£10 per month) it is good value for money. Just turn up at Charlton Athletic Football Club on a Wednesday and join in.

You don't have to attend the full session but timings are approximately: 10.00 Tea/coffee – 10.30 Singing – 11.00 Exercise and activities – 11.45 Quiz and Bingo. 12.00 end. For more information on The Extra Time Hub contact [matt.phillips@cact.org.uk](mailto:matt.phillips@cact.org.uk). If you're interested in daytime events come along on Community Day for news and a taster of possible future events at St Richard's Hall.

# Enter, stage left ...

The Alexandra Players are an amateur dramatic group who meet regularly at Alexander Hall in Bramshot Avenue. CCRA chair Jodie Coughlan is a keen participant in their productions. Their forthcoming drama is 'I am a camera' – the play which inspired the film Cabaret starring Liza Minelli. It will run from Wednesday 29 May for four nights. Tickets are reasonably priced and will be on sale from the end of April. Full details on 07867 627 987 or [alexanderplayers.org.uk](http://alexanderplayers.org.uk).

# CCRA MEMBERSHIP MAKES A DIFFERENCE

Our membership secretary has received letters from residents who have recently joined. They highlight the benefits of becoming a member – to read them in full go to our website ([charltonresidents.net](http://charltonresidents.net)).

For full details contact [membership@charltonresidents.net](mailto:membership@charltonresidents.net) or visit our website [www.charltonresidents.net](http://www.charltonresidents.net).

Here's a summary of what they said: "I joined CCRA recently. It is an understatement to say that I am truly impressed. This is no ordinary residents' association. Everyone in CCRA seems to be very committed to the well-being of our local area."

"I have attended several meetings, especially the ones concerning the Planning Action Group. Charlton is currently being deluged with planning applications for huge developments by sometimes unscrupulous developers.

"CCRA is trying hard to shape these developments to better serve the needs of the local area.

"For instance, we try to push for more affordable family housing, more green spaces, less density more amenities

for the local area and so on. We don't always succeed, but we try hard.

Greenwich council has allocated us a regular time slot when we have a chance to talk about ongoing concerns in the area and more often than not, the council listens. Also, our local MP, even with his busy Brexit schedule, listens to our concerns and helps us whenever he can."

The £12 membership fee for households is perhaps one of the biggest bargains around. By making this small investment you can rest assured that even if you don't have time to take an active role your interests will be represented.

Charlton is a great place to live, and one of the things that makes it great is our strong sense of community. There is no better example of this than the thriving Charlton Central Residents Association. London can be a lonely place, but it doesn't have to be like that.

Your neighbours are waiting to become your friends. Why not join us?

***It is an understatement to say that I am truly impressed. This is no ordinary residents' association***

# Plastic protest!

Pupils' artwork brings home the message on pollution

Pupils at Sherington Primary School may be too young to protest in the streets about pollution but they have been inspired by David Attenborough's campaigning work and have been exploring aspects of climate change.

They have talked to scientists and enquired about the benefits of reducing pollution and congestion for the local and global environment. Recently each class did practical investigations into plastic pollution. Artwork based around their pledges to contribute to reducing emissions was created. Here are some quotes and pledges from the children:

*'It is really important to look at the journey of plastic because it is harming the planet and the animals.'*

*Year 1 child*

*'I'm glad that we looked at plastic bottles for science week because there are too many and I think it should change.'*

*Year 2 child*

*'We want to make a difference for the world and this is one way we can help.'*

*Year 6 child*

*'People need to stop using plastic and start using glass.'*

*Year 5 child*

*'Protect our planet by using no plastic.'*

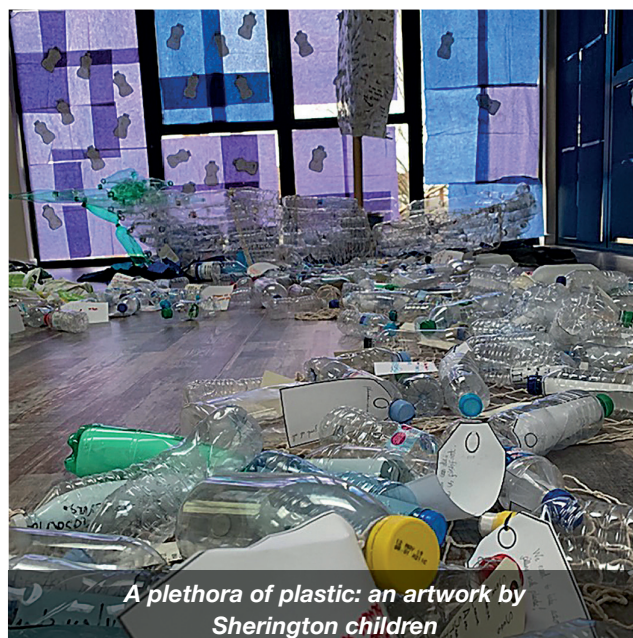
*Year 4 child*

*'Think before you throw it away.'*

*Year 6 child*

*'Non-recyclable plastic should be banned.'*

*Year 6 child*



*A plethora of plastic: an artwork by Sherington children*

*We must stop polluting because our planet is becoming a bin for our litter.'*

*Year 5 child*

For more information see [www.sheringtonprimary.co.uk/science-week-3/](http://www.sheringtonprimary.co.uk/science-week-3/) and <https://www.sheringtonprimary.co.uk/science-week-5>

On his website ([www.matthewpennycook.com/portfolio/climate-change/](http://www.matthewpennycook.com/portfolio/climate-change/)) our MP Matthew Pennycook quotes from Sir David Attenborough: "If we don't take action, the collapse of our civilizations and the extinction of much of the natural world is on the horizon." Matthew adds: "The alarmism and catastrophic thinking that the report provoked are both warranted and valuable. We confront a crisis that requires nothing less than an aggressive global response. We should be alarmed.... We can all do our bit managing our carbon footprints but the onus remains on government to enact laws and policies that would reduce all of our emissions. By taking to the streets over recent weeks, young people have made clear what they want their government to do."

## THE RIVER ALE HOUSE

131 Woolwich Road SE10

Real ales, ciders, wine, gins and nice people.

open until 11pm every day

- SE London Camra pub of the year 2019
- SE London Camra cider pub of the year 2019
- SPBW Greater London pub of the year 2019

## BEAT THE CYBER CRIMINALS

Cyber crime Co-ordinators of the CCNWatch attended a meeting with police to hear about Operation Falcon, an initiative to combat cyber crime, frauds and scams. We were reminded to 'Take 5' when in an awkward or pressurised situation:

- 1 Never disclose your security details,
- 2 Don't assume an email or phone call is authentic
- 3 Don't be rushed or pressured,
- 4 Listen to your instincts,
- 5 Stay in control.

■ For more information see [www.takefive-stopfraud.org.uk](http://www.takefive-stopfraud.org.uk)

## TIME FOR A TRIM?

It's Spring at last! What better time to trim back foliage to make way for new shoots? If you need a helping hand, or know someone who might need assistance, reach out to a neighbour or one of our Management Committee. You can contact us via Twitter, Facebook or by email at [chair@charltonresidents.net](mailto:chair@charltonresidents.net)

# Making Greenwich Greener ...

**W**hen trees grow leaves again and daffodils appear, green issues and the environment suddenly spring to mind for many of us.

For Councillor Denise Scott-McDonald, Royal Borough of Greenwich's (RBG) Cabinet Member for Air Quality, Transport and Public Realm, environmental issues and the challenges associated with them are constantly on her mind.

It was raining on the day we met in Woolwich Town Hall but the councillor's commitment to make the borough's air cleaner and its behaviour greener remained damp-proofed.

Denise says: 'Environmental issues' include air quality, transport and public ground. And that includes everything to do with emissions from vehicles, removing street furniture and encouraging people to cycle or walk and not to use their cars, rubbish collection, use of plastic, also cleaning around areas that RBG owns.'

On 1 March 2019, the Council launched its Junior Environment Champions, a scheme aimed at children aged 5-11 and open to all primary schools or other organisations such as Cub Scouts and Brownies. The programme isn't limited to a year but the Council plans to run an annual competition based on the schools' activities. There is a variety of support to participating schools and groups depending on what they want to do. This includes help with litter picks, advice on improving recycling, delivering classroom talks and assemblies and craft-based re-use activities or other made-to-measure projects.

The Council says it has also developed 'a fun and fact-filled pack' covering seven environmental topics

including sections on water, food waste, recycling, energy and transport, littering and global issues. It is designed to help teachers in supporting and encouraging their pupils to become Junior Environment Champions and to demonstrate to them how their actions in school and at home can make a big difference to the environment. Denise, visiting one of the schools that had signed up to the scheme, says: "I introduced myself to them saying: 'I'm the cabinet minister for rubbish.' And they laughed."

She adds: "They were so knowledgeable about what they could do at home and in the playground and this is what got me excited. For instance, when I joined pupils at the school gates they were keen to join in our campaign about the dangers to our health when people keep their engines running while they're waiting. This project is also about empowering youngsters, showing how they can help."

How can we all adjust our daily activities and behaviour to make a difference?

Says Denise: "Use less plastic, use paper bags. If it's a short journey, walk and cycle – if you have long journeys use public transport. We need to get more women cycling or walking, then you get the kids to cycle or walk."

"If we can get this generation doing it then we can see results. But lots of people like their cars – even turning their heat down and wearing a sweater can make a difference."

She says that council staff are visiting local schools, teaching students about how their behaviour can have an impact on the environment and explaining how they can help to reduce the harm to the planet we all share. For more information and to get involved, email: [junior-enviro-champs@royalgreenwich.gov.uk](mailto:junior-enviro-champs@royalgreenwich.gov.uk)



## A SONG AND A HELPING HAND FOR DEMENTIA CARERS

Do you care for someone with dementia – or maybe you know someone who does? Then perhaps Dementia Carers Greenwich & Bexley can offer you some support.

On the second Monday of each month we have a friendly Singing Together group where carers can sing-along with those they're caring for, from 11.45 – 1.15 at The Stables (next to Charlton House). There is good access, some parking and a cafe where we congregate afterwards. Why not come along on 13 May?

We also hold a meeting just for carers on the third Monday of each month. Many of our volunteers have been carers of someone with dementia themselves and can offer support. This group meets at St Mary's Community Centre, Eltham High Street from 10.30 – 12.00 and the next dates are 15 April or 20 May.

We are totally self-funded and we're a busy group of people hoping to support those who support others.

■ For more information please contact Jenni on 07598 404747

## PICK OF THE LITTER!

Thank you to the volunteers and especially the children from Playing Out, who helped with the Great British Spring Clean on Wednesday 27 March. We managed to litter-pick part of Swallowfield Rd, Inverine Rd, including the plot, some of Sundorne Rd and around St Richard's Hall. And nine bags, ten litter-pickers, four adults, six children and a baby-later we have clean streets!

Thanks to Scott and Alan from the Charlton Taskforce who collected all the bags the next morning. Thanks to RBG for supplying the litter-pickers, bags, tabards and gloves.

# *How happy is my valley?*

... A view from the terraces

## All to play for

The war is almost over, the battles fought and the cost is being counted. The League One field of conflict is tough and makes no allowance for mediocrity or failure. But in this cauldron of competition Charlton have not only survived but prospered under manager Lee Bowyer and are now in with a realistic chance of promotion provided they can get over the line without disaster striking.

So often in the past we have imploded at this point and watched our hopes soar out of the stadium – which is where Lyle Taylor's effort on goal against Bradford was heading last month as he qualified for the Miss of the Season award. Still, he did score the winner!

As I write there are seven games to go and we remain fifth on 70 points. The gap between the seventh club, Peterborough, and us is 12 points – a margin that should comfortably secure us a play-offs place. Even more tempting is to look at second placed Barnsley. They have 79 points to our 70 points and we have a game in hand on them. If we were to win that then we would need only two more success in the remaining seven games to draw level and the tantalising possibility of guaranteed promotion. That presupposes Barnsley lose three games, so it's a big ask. Luton, the current division leaders, are certain to gain promotion as champions as they are on a seemingly unassailable 86 points.

So it is still all to play for.

Injuries have been a major factor in our season but we are currently almost back to full strength. The only long-term

players sidelined are Lewis Paige and Jake Forster-Caskey, who sustained injury before the season began. He is now training again with the first team and, as a key player, may yet play a vital role before the close of hostilities.

Huddersfield have been relegated from the premier-ship and it's possible we will be facing Karlan Grant in the championship in five months time. There is also the spooky chance that we could end up reaching the play-offs final and facing Sunderland once again at Wembley. Who can forget that 7-6 thriller in 1998 that saw Charlton gain elevation to the premiership and named by many as the best final ever played at the national stadium?

If we fail to gain promotion there are some difficult decisions to be made at the club followed by the inevitable bloodletting of squad members. Players we want to keep are precisely the ones who will be moving to better things and high divisions. Patrick Bauer, a towering figure at the back has made it clear from early season that if we stay in this division he will leave. Who can blame him for wanting to better his career? We can only hope Bowyer is able to prise more money from the moth-ridden purse of owner Roland Duchatelet.

Given all the uncertainty surrounding the club's future it is to the eternal credit of Lee Bowyer that he has managed to select and shape such a talented squad. Let's hope his avowed belief of a place in the championship comes to fruition.

Crongers fished. COYR's.

### **The Old Cottage Coffee Shop**

*A traditional tea shop serving high  
quality tea, coffee & snacks*

*Open everyday from 10am in Charlton Park*



*Closes 4pm in winter  
and 5pm in summer*

Comments, feedback, queries or material for the next edition of **Grapevine** should be emailed to: [grapevine@charltonresidents.net](mailto:grapevine@charltonresidents.net) by Monday, 20 May. Alternatively, phone Joy Ogden on 020 8293 3034 or Bob Smith on 020 8853 2697.

**Grapevine** reaches more than 1,000 homes and retail outlets, in our designated area and beyond. To advertise contact [grapevine@charltonresidents.net](mailto:grapevine@charltonresidents.net). Rates for individuals and small businesses: small ads up to 15 words plus contact details: £10 for 1 issue, £30 for 4. Panel ads single column 8cmx8cm: £40 for 1-4 issues, £35 for 5+. Other sizes please enquire.

Check your local noticeboard, the next **Grapevine**, our website (please note new address [charltonresidents.net](http://charltonresidents.net)); Twitter (@ccra\_se7) and Facebook ([www.facebook.com/centralcharlton](http://www.facebook.com/centralcharlton)) for details of CCRA events.

# *I heard it on the Grapevine*

## COMMUNITY GROUPS

### Walking group

Sadly our February walk had to be cancelled due to illness but in March the group went to Walthamstow Wetlands a magnificent site comprising of reservoirs, reedbeds, dry land and manmade paths along the Lee Valley. It is a Site of Scientific Interest where migrating birds can be seen in spring and autumn – but they hid from our view on the windy, wet day we visited! We were pleased to have the delights of the transformed Victorian Marine Engine House, to view displays and to find refreshments in the cafe. We all agreed a trip back during the summer to spot the kingfishers and peregrine falcons regularly seen there will be a must.

Our next walk on Sunday, 14 April will begin at Charlton Station at 10.00. For more information please contact Jill at [jillmo@btinternet.com](mailto:jillmo@btinternet.com).

### Knit and natter

The group will meet on the following dates: 30 April, 21 May, 25 June, 30 July. All sessions take place 2-4pm in St Richard's Hall, Swallowfield Road. You don't have to knit to be part of the group. You can just come along for a natter and we have excellent cake. If you want to learn to knit then we have lots of yarns and some excellent teachers.

### Book group

CCRA Book Group continues its meetings with challenging reading and lively discussions. We've just read Sebastian Barry's *Days Without End* set in the American Civil War and describing the horrors of war alongside the intimate relationship of two young soldiers.

Described by one of our members as in her 'Top Ten', we unanimously liked the period feel of the first person narrative. The book acknowledges the fear, retribution and revenge, and blood-lust of war, but without being too gruesome.

Next on our list is *Washington Black* by Esi Edugyan, which we'll be reviewing on 1 May, and then Barbara Kingsolver's new book *Unsheltered* on 4 June. Contact details: Zoe [zoe31well@hotmail.com](mailto:zoe31well@hotmail.com).

### Singing Group

We resumed our regular sessions in January, and have been singing a varied selection of songs, culminating in a performance at the CCRA Spring Social on 2 April. We are always happy to welcome new members, whatever your level of experience. Although we do give occasional performances, the group is really about singing for our own pleasure, and there's no pressure to attend every session. If you are interested in joining, please contact Chris on 020 8858 7377.

### Instrumental Music Group ('SE7')

Our Monday sessions have been a bit less regular recently, but members of the group have been very active performing at different local events. These have included an evening at Cattleya in February and playing as part of a larger group at ceilidhs for Burns Night in January, and St Patrick's Night in March. We hope to continue this practice in the coming months. We are always interested in gaining new members, whatever your instrument or level of experience, and reading music is not essential. If you are interested in joining the group, please contact Chris on 020 8858 7377.

### Charlton Community Gardens

Charlton Community Gardens will be holding the Annual Plant Sale on Thursday 16 May with a later start of 5.30 to accommodate commuters. All monies raised go back into the project--both the station garden and the community orchard.

Once summer is really here, remember to harvest produce that is ripe. The station garden is tended by the community for the community. And of course the herbs are available all year round.

### Free Film Festival

Are you interested in the Charlton & Woolwich Free Film Festival in September? Mailing list for newsletters/information about the festival: <http://bit.ly/CW-FFF>

Facebook page:  
[www.facebook.com/CharltonWoolwichFFF](http://www.facebook.com/CharltonWoolwichFFF))

## TUDOR TOUCH

EST. 1976

SHUTTERS AND  
BLINDS AND MORE



**LONDON SHOWROOM**

**26 The Village, London, SE7 8UD**

**020 8319 4444**

**[www.tudortouch.com](http://www.tudortouch.com) | [sales@tudortouch.com](mailto:sales@tudortouch.com)**

## Dates for your diary

**Sunday 12 May**  
Walking group  
10am Charlton Station

**Sunday 19 May**  
Open Gardens  
Venues to be advertised  
nearer the time – members  
only event

**Sunday 2 June**  
Big Lunch  
Charlton Park  
12-4pm

**Saturday 6 July**  
Community Day  
Meet at St Richard's Hall  
10-4pm

**Saturday 14 September**  
Flower and Produce Show  
St Richard's Hall  
Entry drop off from 8-10.45am  
2.15-3pm (prize giving)



## SPRING SOCIAL

Despite a hailstorm earlier in the day and the sudden return to winter weather, local residents turned out to jump into spring on Tuesday, 2 April. Members of SE7 provided ambient music, while local residents enjoyed light refreshment, explored craft techniques and sampled a wide range of board games. Local singers sang The Rose (made famous by Bette Middler), a Maori song (prompted by the recent terrorist attack on mosques in New Zealand) and finally, joined by audience members, Lean on Me.



# Charlton's Leading Estate Agent

sales | lettings | property management | land and new homes





46 Charlton Church Lane, Charlton, London, SE7 7AB  
**D** 020 8293 0454 **H** charlton@conranestates.co.uk  
conranestates.co.uk



**C C R A**

**Charlton Central Residents Association**