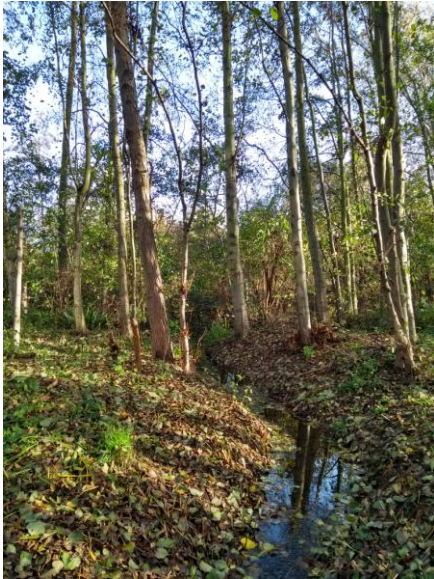


RIVERSIDE PATH AND ECOLOGY PARK

Another short walk with a couple of often missed spots is along the **Riverside Path** heading west towards Greenwich. This area was once renowned for its ship building and repair works, now there is just one company, Cory Environmental, still occupying its original site since 1873.



You will not be able to avoid noticing the maze of overhead conveyor belts and the mountains of aggregate at Murphy's and Angerstein's wharves along your way towards the Ecology Park. Take a stroll along the duckboards through this haven of peace and pleasure looking out for coots, moorhen and the occasional duck, heading towards the **Alder Carr** - a freshwater, flooded area with many alder trees.

On your way to the Yacht Club stop and listen to the sound of the reeds as they blow in the wind and look out for a small **memorial garden**. Here you will see an old rowing boat serving as a flower bed and a tiller preserved in concrete in remembrance to a Raymond Lahane who, the sign tells us, was an Irish Guardsman, Sailor, Gentleman and Rainbow Chaser who died at the age of 90.

If it was summertime I'd suggest, on reaching the Yacht Club, make another stop to listen to that very emotive sound of the boats' rigging tinkling in the wind but this time of year all the boats have been shored and stored under tarpaulin.

Depending on your mood, or that of the weather, you may now want to retrace your steps, turn away from the river to walk through part of the Millennium Village or continue on towards Greenwich. Whatever you decide happy walking everyone!

