

# CHARLTON GRAPEVINE

VINTAGE 17 FEBRUARY 2012  
the newsletter of the Charlton Central Residents Association

## Joined up thinking in 2012

**Y**es, it's another year and time to renew your CCRA membership, or if you have not already done so, to make it your New Year's resolution and join.

CCRA now has more than 200 members and the more we have, the more influence we have with the Council and other local organisations. In the past year 30 of us successfully lobbied the Council over planning issues. Another dedicated group helped develop a programme of planting shrubs and flowers to improve unloved and unkempt spaces in our streets. Meanwhile, we monitor the state of our roads each month and have established very good relations with Cleansweep. More than 50 people again turned out on our community day last July to weed and clear rubbish from the pavements. And our Law and Order group liaises regularly with the local Safer Neighbourhood Team and has helped set up an effective Neighbourhood Watch Scheme.

We have also had lots of fun through regular interest groups and socials. Our Christmas social and carol events attracted more than 100 residents and the local interest groups are regularly supported by 60 to 70 people. People have said that they joined CCRA because they want to put something back into the area where they live. Many value the sense of community spirit they get from our social events. Others have said that just recognising friendly faces

### Quiz night

**STOP PRESS**  
CCRA's fourth popular quiz night is on Saturday, 11 February, at St Richard's Hall, Swallowfield Road. Doors open at 7pm and the quiz starts at 7.30pm. You can register a team by contacting Len on 020 8858 4920. Teams are limited to eight people but anyone can come along and join a team. Entry is £3 but free to members and you can join CCRA at the door. There will be a bar and raffle. Come along for a great evening among friends and neighbours.



**All together now! CCRA's carol singers spread the Christmas cheer**

as they walk down the street is reward enough.

Now is the time to join or renew your membership for £5 a year per person – less than 10p a week. You can be a full member if you live in Calydon Road, Coombe Lodge, Delafield Road, Elliscombe Road, Fossdene Road, Frank Burton Close, Gollogoly Terrace, Inverine Road, Nadine Street, Priolo Road, Sundorne Road Swallowfield Road and Wellington Gardens. Or you can be an associate member if you live outside the area.

Income from membership and advertising goes towards the production of Grapevine, our voice on local matters. Grapevine is the most costly CCRA activity but it keeps everyone in touch, especially people who have little time to spare or who have difficulty getting out and about. To make joining or renewing easy we've printed a membership form on page 2. You can also download a form from [charltonresidents.org](http://charltonresidents.org) - or for any queries please contact Duncan, our membership secretary, on 020 8244 7555.

Happy New Year! We look forward to seeing you in 2012.

### Cut out and keep...

.. the centre pages, which are your guide to who's who and what's what in CCRA, plus a list of emergency contact numbers, councillors and dates for your 2012 diary.



# Spirit of Christmas (just) past

There might have been no snow or Yule logs at St Richard's Hall in early December, but there was plenty of festive spirit among the many people who thronged the CCRA's Christmas social. Members had set out their stalls with goodies ranging from hand-crafted jewellery to hand-made cakes and given children a chance to try their hands at making decorations for themselves. There were raffles and refreshments, and the singing group rounded the afternoon off with a rousing rendition of carol songs.

Then on two evenings in the week before Christmas, our singers toured the neighbourhood bringing seasonal cheer to residents. One of the many rewards was seeing young children's delight as a large group of carol singers graced their doorstep. This year the carollers agreed to donate money raised to Greenwich Carers – and it was with great pleasure that we were able to hand over a record amount of £346-46.

## Survey

In 2009 we conducted a survey of central Charlton residents. We have decided to do another one and hope to deliver it to you by the end of February. This is to gauge the progress we are making, and to see how we can improve the way we meet local needs and interests.

Please take the time to fill it in – whether or not you're a paid up member – it will be useful in helping us become more aware of what central Charlton residents really want. You can drop the completed form in at a house near you.



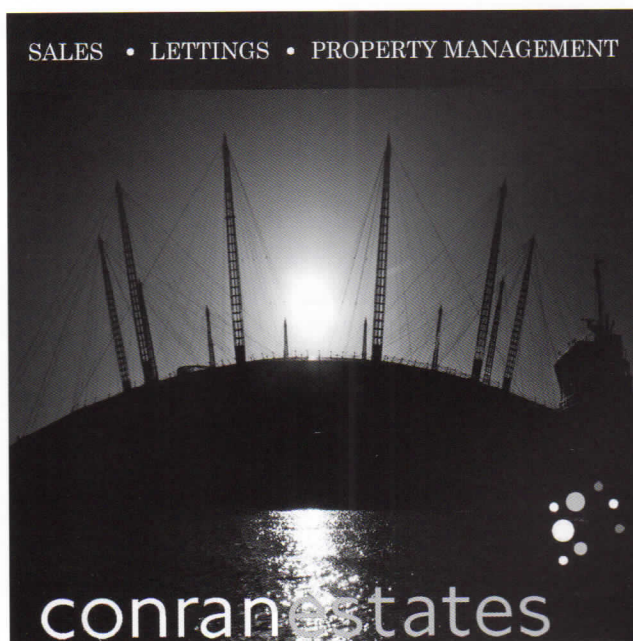
## Rotary Club of Greenwich

Meet every Thursday  
at Charlton Football Club, Floyd Road, SE7 8BL  
12.30 for 1pm Luncheon

Where likeminded business people meet  
for fellowship and help for others.

For more information  
please ring Fred Nunn 0208 8586 410

SALES • LETTINGS • PROPERTY MANAGEMENT



## 2012 Membership Registration



## Charlton Central Residents' Association

I am/ we are joining for the first time I am/ we are renewing my/ our membership (delete as appropriate)

First/ other name \_\_\_\_\_ Family/ surname \_\_\_\_\_

Address \_\_\_\_\_

Post code \_\_\_\_\_ Email(s) \_\_\_\_\_

Home phone \_\_\_\_\_ Mobile \_\_\_\_\_

Data Protection: The information on this form will only be used by CCRA to communicate with you and will not be given to third parties.

Please return this form to 7 Elliscombe Road (It's at the Wellington Gardens end) with £5 cash per person or a cheque made out to CCRA. If you'd like to pay by standing order, please call 0208 244 7555 for a form. Alternatively, visit [www.charltonresidents.org](http://www.charltonresidents.org) where you can download a form.



# Smells funny

**F**or 60 years there has been a very bad smell in Wellington Gardens! More recently there has been periodic flooding.

CCRA has talked to Greenwich Council and Thames Water to get something done. Our objections about developments at 42-44 Wellington Gardens led to some action and in October Greenwich sent an engineer who undertook to get those gulley suckers out on our streets once more – checking u-bends (or their main drain equivalent).

He said that the real culprit was faulty trans-sewer covers, which are Thames Water's responsibility. After two months of cajoling and threatening, new drain covers were finally fitted on Christmas Eve. If this actually does the trick we'll all be delighted. But – if it really was that simple why has it taken 60 years? We remain sceptical and want to enlist your help.

Thames Water has provided a telephone number to report bad smells. You don't have to live in Wellington Gardens to use it – we know there are other smelly drains around here. So every time you sniff those pungent drains, just use this Customer Contact number for Thames Water: 0845 9200 800. This covers all emergencies and the company should respond the same day.

Could you please also let CCRA know when and if you use this emergency number, either by emailing [environment-monitoring@charltonresidents.org](mailto:environment-monitoring@charltonresidents.org) or by phoning 07984 121 761, then we can monitor Thames Water's response and chase them up.

## Safer neighbourhoods

So far winter has been kind to us, but it might not last. If we do get heavy snow we need to keep an eye on elderly or vulnerable neighbours. If you have concerns you should: discuss their needs with them; offer to shop if they cannot get out of the house; contact the Safer Neighbourhood's team on 0208 721 2734; or contact Age Concern Greenwich on 0208 854 8888 for an on-call social worker.

## Your call counts

While we all know 999 is the emergency number for the Police, but you can also ring 101 to report non-emergency crimes or concerns. If you want to remain anonymous, call Crimestoppers on 0800 555 111.

## Peninsular Park

The unlit alleyway at the bottom of Victoria Way that leads to the Peninsular Park retail site is causing concern. During dark nights take extra care if using this route and carry a torch. Those responsible for the footpath have been told – we will keep you posted.

## Changes to Urgent Care Centre

The Queen Elizabeth Hospital's Urgent Care Centre is to be run by the Hurley Group, an NHS GP-led organisation, instead of GRABADOC. The centre will open from 8am til 11pm in a bid to reduce waiting times. There is concern that the contract was awarded without local patient and GP consultation. Some surgeries have petitions and there is an online petition at [www.ipetitions.com/petition/stop-hurley-group-taking-over-greenwich-ucc](http://www.ipetitions.com/petition/stop-hurley-group-taking-over-greenwich-ucc)

### Having problems **RENTING?**

We urgently require all types of properties in and around Charlton



**NO LET - NO FEE**

Fixed fee sales

*Atkins*

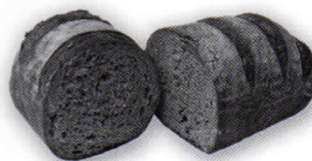
Property Management & Lettings

12 Charlton Church lane. London SE7 7AF

Tel.No. 0208 853 3344

[www.atkinslettings.co.uk](http://www.atkinslettings.co.uk)

[info@atkinslettings.co.uk](mailto:info@atkinslettings.co.uk)



Visit Stefan the German Baker  
in his sales van outside 84 Wellington Gardens  
Every Saturday 8.45 – 9.10am

Note the new earlier times & treat yourself  
to his delicious bread and cakes

*SPECIAL:*

*1 long single*

*white flour roll only 30p*





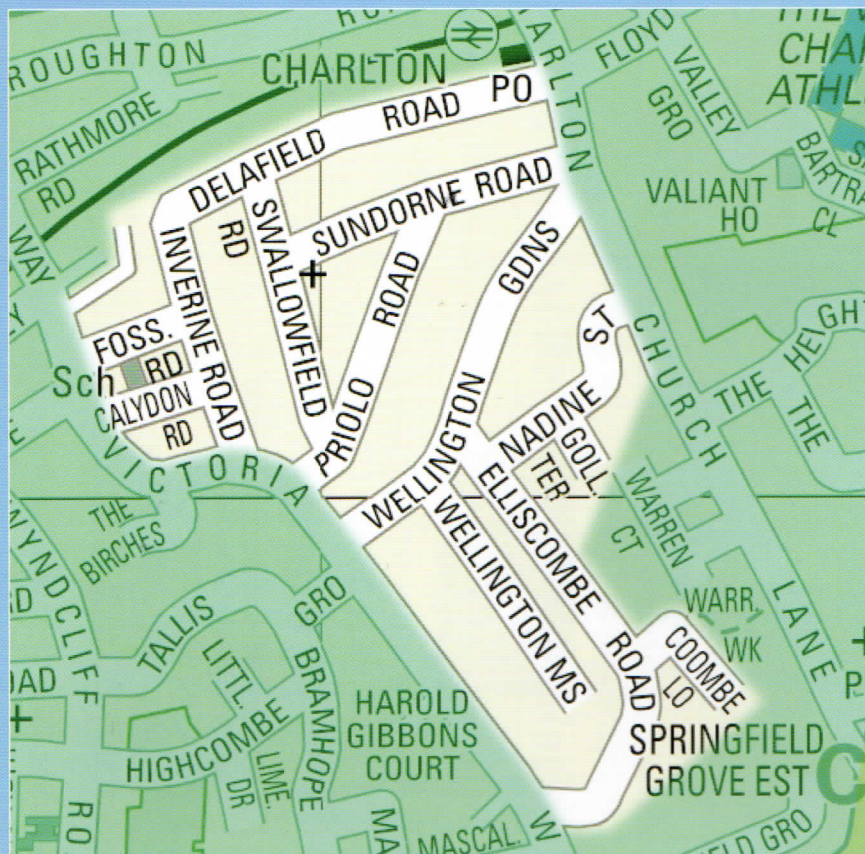
# CHARLTON GRAPEVINE INFORMATION 2012



Charlton Grapevine is the newsletter of the Charlton Central Residents' Association (CCRA). CCRA membership is just £5.00 per year and Associate Membership is now available.

Our four officers are elected yearly at September's Annual General Meeting.

Visit our website for more information: [www.charltonresidents.org.uk](http://www.charltonresidents.org.uk)



## CCRA action groups include:

An environment group which includes three sub-groups concerned with cleaning, greening and planning

A law and order group which liaises with the Safer Neighbourhood Team

An events group that organises quiz nights, social evenings etc.

To join or find out more about any of these groups write to [chair@charltonresidents.org](mailto:chair@charltonresidents.org) or phone Linda on 020 8858 7377

## Local community interest groups include:

### Your CCRA Officers for 2012

<b>Chair</b> <i>Linda Pound</i>	<b>Vice chair</b> <i>Len Weir</i>	<b>Secretary</b> <i>Liz Somerville</i>	<b>Treasurer</b> <i>David Gayther</i>
------------------------------------	--------------------------------------	---	--



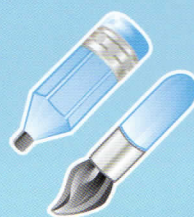
## Events calendar 2011-12

Open meeting re greening project	Monday	6	February
Quiz night	Saturday	11	February
New members	Sunday	25	March
Spring Social	Monday	23	April
Open Gardens & Ceilidh	Saturday	19	May
Big Lunch	Sunday	3	June
Members' barbecue	Saturday	7	July
Olympics		27 July – 12 August	
Paralympics		29 Aug – 9 September	
Open Gardens, flower and produce show	Saturday	15	September
AGM	Monday	24	September
Quiz night	Saturday	13	October
Christmas social	Saturday	8	December

Dates for other events including Christmas events to be confirmed – check your members' bulletin and Grapevine for dates and details

## Useful numbers

Gas leaks	Water	Hospital	Police	Electricity	Greenwich Council
National Emergency Service 0800 111 999	Thames Water Leakline 0800 714 614 Drain Emergencies 0845 9200 800	Queen Elizabeth Hospital 020 8836 6000	Emergency 999 Non-emergency 101 Safer Neighbourhoods Team 020 8721 2734	UK Power Networks 0800 028 0247	020 8854 8888 Fly-tipping 020 8921 4661 Grafitti removal 020 8921 4661



### Art group

email: [juliamunday@hotmail.com](mailto:juliamunday@hotmail.com)



### Book group

Contact Diane on 020 8893 6431



### Gardeners

Current interest is in establishing a community green space.  
Contact Linda on 020 8858 7377



### Local history group

Contact Jill on 020 8854 2452



### Music group

Contact Chris on 020 8858 7377



### Singing group

Contact Chris on 020 8858 7377



### Wine appreciation group

email: [charltonwine@yahoo.co.uk](mailto:charltonwine@yahoo.co.uk)

### Neighbourhood Watch

This area is unique in having a neighbourhood watch scheme that covers the whole of the CCRA area rather than just one or two streets.

For more information contact Brenda on 020 8853 3354 or Annie on 0020 8305 1484.



# *I heard it on the grapevine...*

## How happy is my valley?

**T**o borrow the time-honoured phrase...we're concentrating on the league. Who wants a tacky geegaw in their trophy cabinet anyway. Though, to be fair, a glance down the team list for our 0 – 4 defeat away to Fulham in the FA cup suggests Chris Powell was rather hoping we might pull off a shock win. But it was not to be. My spies among the 7,000 Charlton fans tell me the score line flattered the home side and, had we maximised our chances, it might have been a different result.

Still, we've got skipper Johnny Jackson back from injury now and he's inspirational. Perhaps he'll be the catalyst that kicks BWP back into scoring mode again. Bradley has been off form of late and we need him back in full slottage mode to maintain our supremacy. For, as any fan knows, at this stage of the season it's all about squad strength. This is the time when injuries start to play a major part in the equation and you need strength in depth to keep up the pressure.

We ought to be all right on that score. Powell was given a reasonably-sized cheque book when he arrived and we bought a hatful of players. This is when some of those not always in first team contention, could get the chance to show their mettle.

We're more than half way through the season now and could not be better placed – top and five points clear. We've only lost two games and have more points than any other team in the league. Boys done extremely well! We've just got to keep it going 'til

the end. Can't afford any slip ups for there are teams breathing down our necks; both Sheffield sides, MK Dons and Huddersfield are right there and I fancy Stevenage as an outside punt for the play-offs.

Don't know what happened at Leyton. Odd business. New Year's Eve, Hamer caught handling outside the box and sent off then ex Addick Matt Spring nips in to score. Substitute keeper John Sullivan did a good job in Hamer's absence but it unsettled the team coming so early on (sixth minute) and we never really recovered. Fortunately we moved on from there and on 2 January started our New Year Campaign by smacking in a very late winner at The Valley to beat Brentford 3 – 2. Then followed a vital three points away at close rivals Sheffield United with Johnny Jackson scoring direct from a free kick.

As I write we have a crucial match coming up: Sheffield United at home. By the time you read this we should know the result and have a better picture of how the second half of the season is unfolding. Hopefully with the likes of Yann Kermorgant in such fine form and Jackson back in harness and maybe BWP returning to scoring ways we will have enhanced our position. Congrats fessed.

PS: Now Greenwich is a royal borough I think it's time we dismissed thoughts of luring a Russian oligarch to boost our fortunes and looked to Buck House. Charlton Athletic, by Royal Appointment. I like the sound of that. Maybe we could persuade Madge and Phil up to the Buge for post match beers.

Come On Ones Reds!



*Staying in is the new going out!*

Are you ready for Pancake Day?

I have some fantastic sweet and savoury pancake recipes to share with you when you hold a Pampered Chef Cooking Show!

The Pampered Chef cooking shows are a fun and relaxing way to learn new recipes, try out great kitchen products and have a laugh with your friends. As a bonus, hosts could receive free and discounted products.

Fundraising is important for me, so if you have a cause close to your heart give me a call and we can chat about how we can make some money for it.

**Contact: Tamara Davey**  
**07941 281963**  
**Tamara@davey.uk.net**

Available for: Daytime Events, Evening Events, Stalls, Home Parties

## Signed off

Thanks to the inspirational efforts of Elliscombe Road CCRA stalwart Peter Somerville we got our efforts to auction the old Valley Pub sign into a Charlton home match programme and onto eBay. The bidding was frantic and we looked like raising a substantial sum to go towards our Greening Project. Sadly, due to circumstances beyond the control of CCRA, the winning bid became invalid and we now have to rethink plans for the sign. The committee is considering the project but any constructive ideas would be welcome.





# Local community interest groups

## Singing

The group had a busy schedule just before Christmas, performing at Woodlands Farm on 27 November, the CCRA Christmas Social on 3 December, and at the Woolwich Winter Warmer event in General Gordon Square on 12 December. After all that, we still had time to spend two evenings carol singing around the CCRA neighbourhood and I'm very happy to report that we raised nearly £350 for Greenwich Carers. Dates for spring are: Jan 12, 23; Feb 9, 20; Mar 8, 19. Sessions start at 7.30 and take place at 26 Wellington Gardens. We always welcome new members, and if you would like to join us, please contact Chris on 020 8858 7377.

## Music

The music group will start up again on Monday, 30 January and will meet fortnightly thereafter. The group is open to anyone playing any instrument, whatever their level of expertise. We have a wide repertoire, and anyone in the group is free to choose any music they like for us to play. If you are interested in joining, please contact Chris on 020 8858 7377.

## Local History

A fascinating talk by Frances Ward at the Greenwich Heritage Centre lead us to our current project. She spoke of the 'Peopling of Greenwich' – the various groups of immigrants to the Borough, largely, in the 19th century. One or two of us had, during our last project, found residents in our CCRA area who had come from afar and thought we might do our own research on the topic. Thinking it difficult to find many from abroad, we decided to include people from other parts of the UK. But our eager researchers were surprised to find how many foreign immigrants were here at that time.

So we are now searching census returns from 1871 to 1911 looking at where the residents of our streets were born and recording their occupations (this might give us an idea about the reasons why they came to Charlton during that period).

Then last autumn we heard about a Reminiscence Project, collecting local people's memories of the parks in Charlton. Some of us went to a meeting at Charlton House and were offered training as interviewers so we might help. We are about to finish this training and start interviewing residents of wider

Charlton, but hope also to use our new skills for a future project locally.

In the meantime, we enjoy our meetings as well as our independent research and would welcome other interested folk. For details of our next meeting, please call Jill on 0208 853 4366.

## Art

Calling all budding artists - time to dust off that paint-box! if you are interested in forming a drawing/painting group to meet in the evening on a monthly basis, please contact Julia on [juliamundy@hotmail.com](mailto:juliamundy@hotmail.com). The aim is to provide a friendly and supportive environment to work on individual projects. You'll need to bring your own ideas and materials, but refreshments and the occasional still life will be available! Due to space constraints numbers will be limited, so please get in touch.

## Sounds interesting

CCRA member Rachael Perrin is a member of Soundcastle – which runs community musical projects. Rachael is also a founder member of our local band and was director of last year's Hornfair opening musical extravaganza, featuring both the local band and singing group.

Soundcastle will run a paired project in Bow and Charlton, aimed at musicians of any age and level of competence. The Charlton sessions will start on Monday 27 February and run to 4 June at St Richard's Community Hall in Swallowfield Road from 4.15 – 5.15 or 5.45- 6.45. Sessions are free and there are opportunities to sing, play, create and explore. Contact Rachael on [rachael@soundcastle.co.uk](mailto:rachael@soundcastle.co.uk).



### CHANGE A CHILD'S LIFE IN 2011 FOSTER WITH GREENWICH

#### Do you:

- like caring for children
- have a sense of humour
- have a spare room
- want to make a difference

**Then we would like to hear from you.**

freephone 0800 052 1499  
[www.greenwich.gov.uk/fostering](http://www.greenwich.gov.uk/fostering)

 Greenwich  
Council

Promoting equality and quality of life for all



## Dates for your diary

**Monday, 6 February**

**OPEN MEETING** - setting up a community garden. 7.30pm at St Richard's Hall, Swallowfield Road

Come along and have your say about what you'd like to see in a local community green space. (See the story on this page)

**Saturday, 11 February**

**QUIZ NIGHT**

Doors open at 7pm/ quiz begins at 7.30pm

St Richard's Hall, Swallowfield Road

Entry, £3 (members free) Contact Len on 020 8858 4920 to register for a team

Or just turn up and join in!

**Monday 23 April**

**SPRING SOCIAL**

7.30pm at St Richard's Hall Swallowfield Road

## Classified Ads

Grapevine currently reaches 1000 homes and other outlets in the area. If you would like to advertise goods or services cheaply, effectively and locally, contact Sarah Roseblade on 0208 244 2405 or [sarah.roseblade@ntlworld.com](mailto:sarah.roseblade@ntlworld.com). A form can be found on our website.

Rates for individuals and small businesses:

- Ads up to 15 words plus contact details cost £10 for one issue or £35 for four issues.
- Ads containing up to 20 words, contact details & an image/logo cost £20 for one insertion or £70 for four.

## Therapy can help

Cognitive-behavioural therapy can help with a range of problems. Contact psychologist Jon Gowlland at [jon@southlondontherapist.co.uk](mailto:jon@southlondontherapist.co.uk) or 07980 639090. Friendly, confidential, Charlton-based service.

Comments, feedback, queries or material for the next edition of Grapevine should be emailed to:

[grapevine@charltonresidents.org](mailto:grapevine@charltonresidents.org) by 23 March.

Alternatively, phone Joy Ogden on 0208 293 3034

or Bob Smith on 0208 853 2697.



## Community gardens open meeting

**W**ould you like to see more open space in the central Charlton area? What should we have in our community garden?

The land on Highcombe opposite the allotments would make a marvellous garden for the local community. It would provide a space for schoolchildren and older people to grow flowers and vegetables and appreciate our local wildlife. It could be a space to sit and catch a summer breeze in peace or the site of a community barbeque.

A dozen people who first came together as the CCRA Greening Group are keen for more neighbours to join them in developing a community garden. We have begun dealing with the issues of access to the land and even heard of grants that could be used to transform community spaces.

We are keen to involve parents of schoolchildren at Sherrington, Fossdene and Our Lady of Grace schools. The site is a buggy's distance from our local schools and experienced horticulturalists have offered to support new gardeners in starting a Growing project. And for anyone who lives in a flat without a garden, this could be your chance to get your fingers in the soil and bring home some pots for the windowsill.

The open meeting on 6 February (see Dates for your Diary on this page) will be your first chance to talk with neighbours about what might happen and how you could take part. Come along and give us your views. Contact Judy Wolfram on 0208 858 8299.



## Valentine's Day massacre?

Charlton libraries could be under threat now Greenwich Council has announced proposals to turn the service over to Greenwich Leisure Limited, the not-for-profit company, to save money.

All the borough's 13 libraries are affected. The council is set to decide on the change on Valentine's Day. Protest meetings and petitions are being organised. Unite 2050, the union representing public sector workers, fears the company may make cuts in services and charge for others that are currently free.

**Charlton Central Residents Association**