

# CHARLTON GRAPEVINE

VINTAGE 22  DECEMBER 2012

The newsletter of the Charlton Central Residents Association

## A Christmas cracker!

**C**entral Charlton residents got together on 8 December to celebrate. Christmas was the theme but getting together and enjoying the company of friends and neighbours was the flavour. Mulled wine and mince pies, and stalls for last-minute presents, all added to the festive spirit. It was great to see so many of you wishing one another well and enjoying music from many of our musical neighbours. Local band SE7 delighted us once again with their lively tunes and our own local singing group sang some familiar songs and others less well-known. After that it was everyone else's turn and there was some fantastic carol singing for all to join in. Thanks to all who came along and supported us!

Carol singers will be serenading you in your homes on 17 and 20 December. On both evenings we will be touring CCRA's streets. If you'd like to join us, come to 26 Wellington Gardens at 6.45pm – on either (or both) evenings, from where we'll set off. We'll also need a couple of people to shake buckets if you fancy coming but don't want to sing. Singers (and bucket shakers) will be invited for warming refreshments at the end of the evening. This year we're collecting for BIG (Blind Independence in Greenwich) – a charity which supports blind and partially sighted people in Greenwich. For example, one of their projects provides tandems to give blind people the exhilarating opportunity of cycling

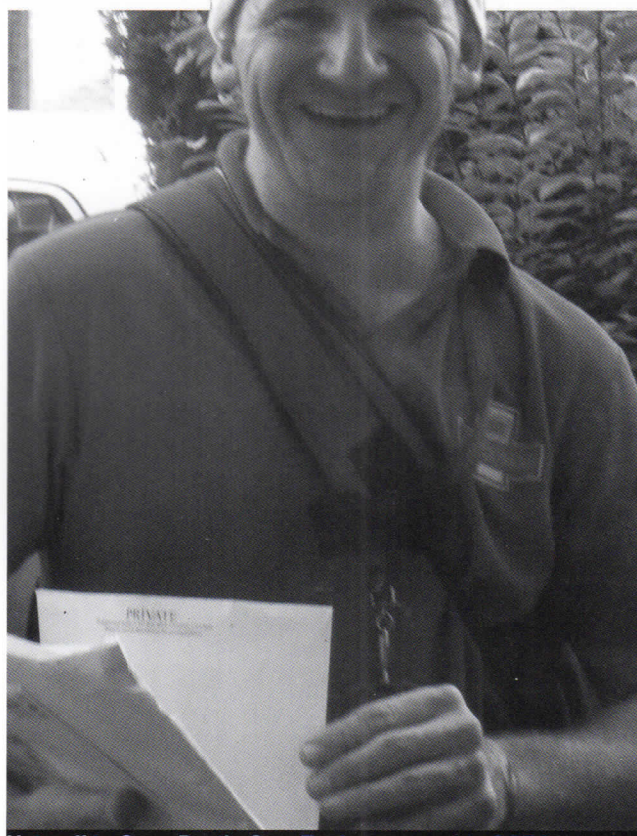
If you'd prefer to stay at home by the fireside, please listen out for our dulcet tones and be ready to throw a contribution into our buckets. CCRA singers will be well practised, having sung carols at Woodlands Farm, General Gordon Square Winter Warmer, and the Wassail at Charlton House.

### Good health!

Find out what the changes to South London Healthcare NHS Trust and the NHS in south east London will mean for you at a meeting with Dr Hany Wahba and Greg Ussher, both of the clinical commissioning committee. It takes place at 8pm on 28 Feb, at St Richard's Hall, Swallowfield Road

See page 2

**STOP PRESS**



Hats off to Gary: Postie Gary Tredget out on his CCRA rounds

## Well ho, ho, ho! It's our Christmas male!

Popular postie Gary Tredget is just what a postman should be – kind, friendly and helpful. And he entered into the spirit of the festive season Santa-style as he did the CCRA rounds. He has been on our 'walk' for the last three years, and has been delivering mail since August 1999. Gary loves his work and is a welcome sight to us regulars. But he's not so keen on the 6am start. That's when he sorts post and prepares the bags before setting out. He walks up to seven miles a day but at Christmas he and his fellow posties set off earlier, the weather gets colder and the bags get heavier – up to 90 kilos at busy times. Gary's message to CCRA residents: 'Happy Christmas to you all.'

## Festive greetings to one and all!





# Major health check for SLHT

## CCRA's response to the consultation

A special administrator was appointed in July to recommend to the Health Secretary ways to resolve South London Healthcare Trust's (SLHT) significant financial difficulties within three years. The administrator's key recommendations and CCRA's responses (in italics):

✦ Queen Mary's Hospital, Sidcup (QM) will close as an inpatient hospital and become 'The Bexley Health Campus': to be sold or transferred to Oxleas NHS Trust and services provided by 'a range of providers'. *A wide range of community services are proposed but there are no details about funding, or public consultation about the location's suitability. It seems likely that some services will be opened to independent sector providers.*

✦ Queen Elizabeth Hospital, Woolwich (QE) will retain all its services but Lewisham Hospital (UHL) will take it over and run both hospitals as a single organisation.

✦ Lewisham Hospital will lose its accident and emergency department (A&E) and become an Urgent Care Centre, dealing with cases unlikely to need a hospital stay. Full A&E services will be provided by King's College, St Thomas', QE and the Princess Royal University (PRU) hospitals

*The proposed closure of Lewisham hospital's A&E is of great concern as the QE is already under pressure. It is intended to concentrate A&E services where complex medical conditions are treated but resources should reflect the growing numbers who would choose to go to an A&E centre rather than an Urgent Care Centre.*

✦ Complex medical conditions would be treated at King's College, St Thomas', QE and PRU hospitals

✦ Specialist, non complex elective services will be provided at Guy's, St Thomas' and King's College hospitals as today

✦ Routine, non complex operations requiring a hospital stay will be provided at UHL, which would serve the whole of South East London

*As UHL will become SE London's sole provider for routine surgery such as hip replacements, we fear that resources might be inadequate for a growing elderly population. The proposed £36 million saving on staff salaries gives little concrete detail and does not address the actual staffing levels required to meet patients' needs.*

✦ PRU will be taken over by King's College Hospital NHS Foundation Trust or, following a procurement process, run by another organisation, either an NHS or independent sector organisation or a combination of both.

*There is widespread concern that services could be privatised and private patients would be given priority. Local people would prefer King's College Hospital to run the PRU.*

✦ Two options are suggested for maternity services: (i) consultant obstetrician-led maternity services provided only at King's College, St Thomas', QE and PRU hospitals; (ii) a 'stand alone' consultant obstetrician-led delivery unit should also be provided at UHL

*Further consultation is needed, to ensure that maternity services in hospitals and the community are properly resourced.*

✦ The Department of Health (DoH) should write off the Trust's significant accumulated debt caused by the private finance initiative (PFI) contracts and provide additional funds each year to cover part of the costs of the PFI buildings at QE and PRU hospitals, until the contracts end.

*We welcome the DoH's recommendation to alleviate the problems caused by the disastrous PFI contracts and write off accumulated debts*

*Residents want Matthew Kershaw to recommend establishment of an accountable commissioning body so people receiving health services can provide feedback on their effectiveness and influence their resource and allocation locally.*

### JANUARY SALE AT

The Pampered Chef  
*discover the chef in you®*



Contact me now for more information  
Tamara Davey, Independent Consultant  
07941 281963 tamara@davey.uk.net  
www.pamperedchef.biz/tamaradavey  
www.facebook.com/tamaradaveypamperedchef



# Charlton Community Gardens in blooming good health

**C**harlton Community Gardens will soon have a bit of land to grow on! After the excitement of the Olympics, we met Southeastern Railways to find out what's involved in 'adopting' Charlton station. We shall have the use of the larger bed beside the canopy outside the down platform. Everyone who works the site will first have to complete Southeastern's Health and Safety training.

At our next Open Meeting on Monday, 25 February at 7.30 pm in St Richard's Hall we'll discuss how to progress and we're keen to hear from people who might join the Working Party for a couple of hours on a Saturday morning once a month. The Steering Group is also beginning discussions with councillors about a piece of land on the Highcombe site.

If you are ordering seed in the next few weeks, consider growing extra seedlings for another Plant Swap. Also if you're moving or dividing any shrubs, or clearing seedlings, do pot some up for trading with another local gardener.

Congratulations to the winners of the Edible Window-box competition, Gordon Parrish and Bill Dolan. As joint first place and neighbours who work together, they shared their prizes: a voucher from Sparkes the Butcher at The Standard and a pair of secateurs from Marnell's. Theo Saldin took the prize in the under 16's competition, winning a voucher from Ottie and The Bea, while Maria Bloor had the over 16's runner-up prize from Well Bean.

Enjoy the season of mistletoe and holly and we look forward to seeing you in the new year.

email: [charltoncommunitygardens@gmail.com](mailto:charltoncommunitygardens@gmail.com)

## Neighbourhood Watch - Winter nights and Christmas time

The evenings get darker, and burglars are looking for valuables and cash. Here are the Metropolitan Police's top tips to keep your home safe:

1. Mark or etch your property with your postcode, house or flat number, or the first three letters of your house name.
2. Register items with a serial number at [www.immobilise.com](http://www.immobilise.com)
3. Do not leave your car keys, valuables or ID documents near a door, letterbox or window.
4. Always check who's at the door and don't open it if you feel anxious.
5. Close and lock all your doors and windows, even if you are only going out for a few minutes.
6. Keep your valuables out of sight.
7. Leave some lights on if it will be dark before you get home.
8. Fit a mortice lock to your front door and other external doors. Consider installing a burglar alarm.
9. Always keep sheds and outbuildings locked.
10. Cancel milk or other deliveries if you will be away for days or weeks at a time.

Visit Stefan, the German Master Baker in his mobile shop just outside 84 Wellington Gardens, every Saturday between 8.45 - 9.10 am.

Treat yourself to his delicious breads, cakes and delicatessen.



## CHANGE A CHILD'S LIFE IN 2011 FOSTER WITH GREENWICH

### Do you:

- like caring for children
- have a sense of humour
- have a spare room
- want to make a difference

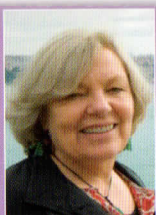
Then we would like to hear from you.

freephone 0800 052 1499  
[www.greenwich.gov.uk/fostering](http://www.greenwich.gov.uk/fostering)

**Greenwich Council**

Promoting equality and quality of life for all





### Gardeners

If you are a keen gardener and would like to be involved in local developments contact either [info@charltonresidents.org](mailto:info@charltonresidents.org) or the local group attempting to set up some shared garden space in the area [charlton.community.garden@gmail.com](mailto:charlton.community.garden@gmail.com). Alternatively for further information phone Linda on 020 8858 7377.

## Events calendar 2012–13

### Carol singing 2012

Monday 17 & Thursday 20 December

### Consultation re daytime events

Friday 4 January 2013 from 2–4pm

### Consultation re daytime events

Tuesday 8 January from 10–12am

### Quiz night

Saturday 2 February

### Table top sale

Saturday 2 March

### Spring social

Monday 22 April

### Cycling event

Saturday 11 & Sunday 12 May

### Open Gardens

Saturday 18 May

### Big Lunch at Charlton Park

Sunday 2 June

### Community Day

Saturday 6 July

### Flower and produce show

Saturday 14 September

### Open Gardens

Sunday 15 September

### AGM

Monday 7 October

### Quiz night

Saturday 9 November

### Christmas event

Saturday 7 December 2013

All events are subject to confirmation – check your members' bulletin and Grapevine for dates and details.



### Local history group

Contact Jill on 020 8854 2452



### Music group

Contact Chris on 020 8858 7377

### Singing group

Contact Chris on 020 8858 7377



### Wine appreciation group

email: [charltonwine@yahoo.co.uk](mailto:charltonwine@yahoo.co.uk)

### Neighbourhood Watch

This area is unique in having a neighbourhood watch scheme that covers the whole of the CCRA area rather than just one or two streets.

Contact Brenda on 020 8853 3354 or Annie on 020 8305 1484.

## Useful numbers

### Gas leaks

National Emergency Service  
0800 111 999

### Water

Thames Water Leakline  
0800 714 614  
Drain Emergencies  
0845 9200 800

### Hospital

Queen Elizabeth Hospital  
020 8836 6000

### Police

Emergency 999  
Non-emergency 101  
Safer Neighbourhoods Team  
020 8721 2734

### Electricity

UK Power Networks  
0800 028 0247

### Greenwich Council

020 8854 8888  
Fly-tipping  
020 8921 4661  
Grafitti removal  
020 8921 4661





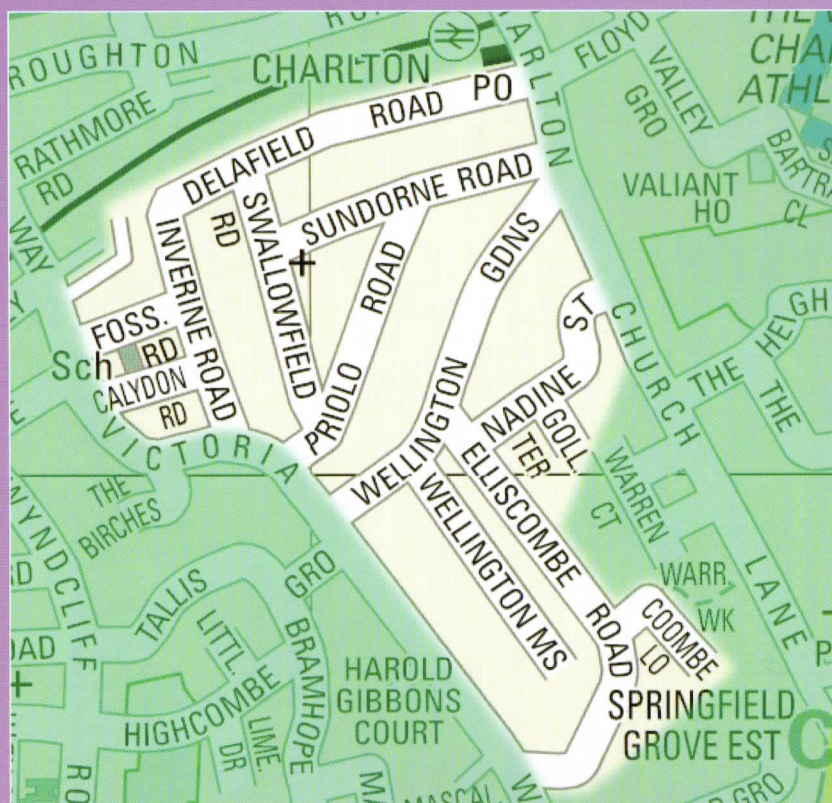
**Charlton Central Residents Association**

# CHARLTON GRAPEVINE INFORMATION 2013

Charlton Grapevine is the newsletter of the Charlton Central Residents' Association (CCRA). CCRA membership is just £5.00 per year and Associate Membership is now available.

Our four officers are elected yearly at the Annual General Meeting in September or October.

Visit our website for more information: [www.charltonresidents.org.uk](http://www.charltonresidents.org.uk)



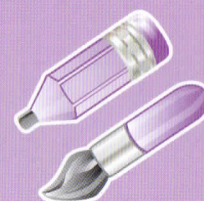
## CCRA action groups:

Three groups focus on the environment looking at greening, planning and cleaning. In order to do this members liaise with the council and with local housing associations.

The law and order group liaises with the Safer Neighbourhood Team and with Charlton Central Neighbourhood Watch.

CCRA organises a large number of social and community events led by teams of volunteers.

## Local community interest groups include:



### Art group

email: [juliamundy@hotmail.com](mailto:juliamundy@hotmail.com)

### Book group

Contact Diane on 020 8893 6431



## Your CCRA Officers for 2013

<b>Chair</b>	<b>Vice chair</b>	<b>Secretary</b>	<b>Treasurer</b>
Linda Pound	Len Weir	Liz Somerville	David Gayther



# *I heard it on the grapevine...*

## How happy is my valley?

**T**he roller coaster that is Charlton's current season is heading towards the halfway mark and we're not doing too badly. Injuries still plague us and leave Chris Powell with selection dilemmas, but he has been able to strengthen the squad with loanees and some of the key players are either back or soon will be.

As I write we have played 20 games, and the stats are looking good. We are currently 13th and have notched up three wins, a draw, a win and a draw in our last six games. Our last match at Millwall, was a tough local derby, especially as the Lions are the division's in-form side. But we came through unscathed and the nil-nil draw was a fair result. We actually looked more fragile in the previous game against bottom team Peterborough.

They were unlucky. Their approach play was dangerous, they played a tight off-side game but they just couldn't finish off. And we were no better until our secret weapon, Ricardo Fuller, changed the game late in the second half with a powerful dipping shot that curved over the despairing hands of the keeper and into the back of the net. Top-drawer stuff and it proved the catalyst that galvanized Les Garçons into action. Danny Green came on to inject pace and width. He got behind the defence fired in a low cross

and there were both Hulse and Yann Kermorgant to finish off. Hulse beat the keeper but Yann, running in from the left, was the man to put the ball over the line. Final score, 2 – 0. A great return for fans favourite Kermorgant. Fuller limped off after his outstanding effort and we can only hope his suspect hamstring proves a minor injury.

Recent arrival, Arsenal loanee Emmanuel Frimpong, a robust midfielder, looks a good bet and did enough against Huddersfield to keep Stephens out of the starting line-up the following Tuesday. Morrison needlessly picked up a third yellow and missed the Millwall derby. By the time I next write we will have gone through the Christmas period and played a further 13 games and we should have a clearer idea of the final outcome. My spy on the inside tells me additional funding could be available before the January transfer window closes, so maybe we'll get an extra striker and either sign Frimpong or another midfielder to become our playmaker, a position that desperately needs filling. My start of season prediction was for us to finish in tenth place, a position viewed as risible by the Buge post-match inquest committee – a gal-limaufry of negative ne'er-do-wells if ever there was one. But I stand by it. And you never know, the play-offs are only just over the horizon... COYR's!

Having problems RENTING?  
We urgently require all types of property in  
and around Charlton.



No let - no fee  
Fixed fee sales

**Atkins**



Property management and lettings

12 Charlton Church Lane, London SE7 7AF

tel. 0208 853 3344

info@atkinslettings.co.uk

www.atkinslettings.co.uk



**SEWING TIME**

7 Delacourt Road, Blackheath, SE3 8XA

Call: 02084655520/07403583001

info@sewingtime.co.uk

www.sewingtime.co.uk

For: Clubs, Courses, Workshops

Fabrics, Haberdashery and more



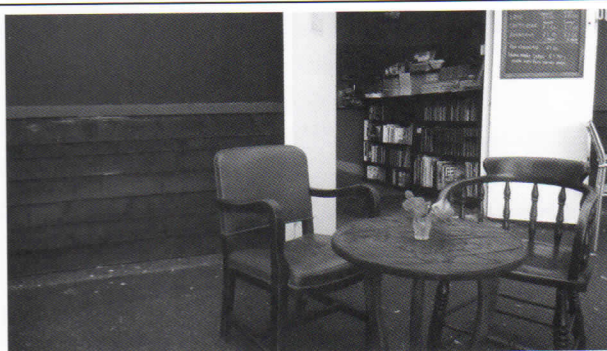
# Community interest groups

## CCRA Singing Group

The singing group continues to thrive and we reach December with a full performance programme ahead of us. By the time this issue is published we will have performed at Woodlands Farm Open Day, CCRA Christmas Social, Woolwich Winter Warmer in General Gordon Square, and the Wassail at Charlton House. There is still time for anyone to join us for our local carol singing on Monday 17 and Thursday 20 December. We will resume in the New Year (dates to be announced soon) and we are always happy to welcome new members – please contact Chris on 020 8858 7377.

## CCRA Music Group ('SE7')

The group is now playing regularly at Cattleya, our local restaurant on Charlton Church Lane. Our latest session there was on 18 November, when we were happy to welcome a couple of guest performers to join us on some of our numbers. Our final session there will be on Sunday, 16 December. We are also playing at the CCRA Christmas Social, where we hope to be joined by some former band members. We meet on alternate Mondays, and are always pleased to welcome new members on any instrument, whatever your level of expertise. If you are interested in joining us, please contact Chris on 020 8858 7377.



**The Old Cottage Coffee Shop**  
Charlton Park

Winter time opening hours  
Mon and Tues 10:00-2:00 (school term)  
Wed-Sun 10:00-4:00  
**All day breakfast now available**

## Local History Group

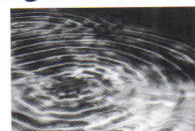
The Local History Group is still ploughing its way through the earliest censuses (1891 and 1901) for our houses and looking at the people who came to our CCRA area when it was brand new and anxious to attract people for the wealth of job opportunities in the wider locality! Searching and recording the information can be a chore, but when you have a genius with the spreadsheets (Chris Harrison), those dry bits of data become the stories of real people, and in the end we'll have a very interesting story about our neighbours from over 100 years ago. In October some of us saw an excellent production of 'The Ragged Trousered Philanthropists' (Robert Tressell's novel about painters and decorators in Edwardian times, so very pertinent).

## CCRA daytime meet-up for all ages

After the big success of CCRA evening events and interest groups, residents have asked for a week-day daytime meet-up. To get these started you are invited to come to two initial meetings at St. Richard's Hall in Swallowfield Road on Friday, 4 January, 2-4pm and on Tuesday, 8 January 10am-12noon. These meetings are open to all ages and interests and we want to use them to get to know each other and to hear what people expect from daytime meet-ups, and when would be the best day and time. We hope the initial meetings will develop into regular get-togethers, where we can learn from each other, do activities together and have a good time. Everyone is welcome and we are looking forward to meeting you in January!

An Holistic Healing ~ Massage, Sound & Voice  
Introduces

## *Sound Circle Sonic Meditation Group*



Discover and free your true voice,  
whilst finding a simple, effective way-in to  
meditation

Venues in East Greenwich & Covent Garden  
Contact: Judith – 07941 529 322  
Judith.healinghands@gmail.com  
More information  
[www.handsandvoice.com](http://www.handsandvoice.com)



## Dates for your diary

**Monday 17 and Thursday 20 December**

Carol singing

Meet at 26 Wellington Gardens at 6.45. Warming refreshments served to singers at the end of the evening.

**Friday, 4 Jan 2-4 pm and Tuesday, 8 Jan 10-12**

at St Richard's Hall, Swallowfield Road

Have your say on local daytime events!

(see page 7 for further details of new group)

**Sunday, 6 January**

Walking group takes its first steps

(see story this page for details)

**Saturday, 2 February**

Quiz night. 7.30 at St Richard's Hall, Swallowfield Road (Doors open at 7.00pm)

To book a table please contact Linda on 020 8858 7377 or email [info@charltonresidents.org](mailto:info@charltonresidents.org)

**Thursday, 28 February**

What do health changes mean for you?

8.00 – 9.30 pm at St Richard's Hall, Swallowfield Road. Come along and hear from senior officials engaged in implementing changes in NHS in our area. Have your say!

## Classified Ads

Grapevine currently reaches 1000 homes in our designated area and beyond. It can also be found in a wide variety of retail outlets in the vicinity. If you would like to advertise goods or services cheaply, effectively and locally, contact Sarah Roseblade on 07779024226 or [sarah.roseblade@ntlworld](mailto:sarah.roseblade@ntlworld). Rates for individuals and small businesses:

- small ads up to 15 words plus contact details cost £10 for one issue or £30 for four issues.
- panel ads containing up to 20 words, contact detail and an image/ logo cost from £30 for one insertion or £100 for four.

### Ashley Pet Services - Professional Insured Pet

**Care** Outstanding care for your pets 365 days a year. Dogs, Cats, Small Animals, Reptiles & Fish - Staff CRB checked

[www.ashleypetservices.com](http://www.ashleypetservices.com), 07961 066422.

### St Richard's Church Centre, Swallowfield Road

Spacious, clean and fully accessible hall available for functions. Fully functioning kitchen, tables and chairs – suitable for birthday parties, small weddings and community gathering. Rates negotiable. Enquiries – please call Karin Tucker on 07980848185

## Oh yes it is... the panto!

Book early for this year's festive offering from St Luke's Players, Babes in the Wood. It's a traditional panto written and produced by Gwen Zammitt and, as usual, will be performed at Charlton Assembly Rooms in the village on Friday and Saturday, 18 and 19 January and again on Friday and Saturday 25 and 26 January. Tickets are £10 for adults and a fiver for children. Tel 0208 319 8369. All profits to Shelter.

## Snap decisions

Plans for the CCRA Photographic Competition 2013 are moving ahead. It will be staged at St Richard's Hall on 22 April at the CCRA spring social. The theme is Celebrations in 2012. Eminent Blackheath Photographer Fergus Noone will be one of the judges along with Carol Kenna from Greenwich Mural Arts and Grapevine Editor and former Fleet Street journalist Bob Smith. Rules are: Entrants must be paid up members of C C R A ; all exhibits must be your own work and not previously published; prints can be black and white or colour; no photo manipulation; minimum size of photo 10" by 8" and mounted on stiff card. There will be an under 18 group and an over 18 years group with 1st, 2nd and 3rd prize for each section. You may enter more than one photograph. More details in February Grapevine.

## Put your best foot forward

As part of the CCRA Gets Active initiative, we will be organising regular Sunday afternoon walks starting in the New Year. Our first walk on 6 January will be a leisurely stroll along the river from the Thames Barrier to North Greenwich. You can join us at several points depending on how energetic you are feeling:

- 8 Elliscombe Road at 2.00pm
- Thames Barrier Visitor Centre 2.45pm
- The Anchor & Hope 3.15pm

Or you may just want to join us for a drink at the Pilot Inn, North Greenwich from 4.00pm

If you are able to join us or have suggestions for interesting walks, please contact Palvinder:

E: [palvinder.banwatt@gmail.com](mailto:palvinder.banwatt@gmail.com) M: 07984121761  
See you in the New Year.

Comments, feedback, queries or material for the next edition of Grapevine, should be emailed to [grapevine@charltonresidents.org](mailto:grapevine@charltonresidents.org) by 25 January. Alternatively phone Linda Pound on 0208 858 7377, Bob Smith on 0208 853 2697 or Joy Ogden on 0208 293 3034.

