

# CHARLTON GRAPEVINE



VINTAGE 63  December 2021

The newsletter of the Charlton Central Residents Association

## GREETINGS OF THE SEASON!



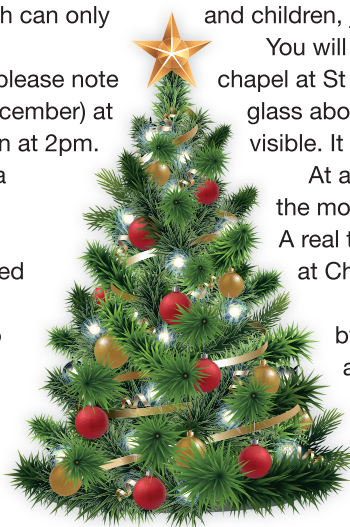
It's beginning to look a lot like Christmas – which can only mean our annual community Christmas Fayre.

It will take place on Saturday 11 December (please note change of date – previously advertised as 18 December) at St Richard's Hall, Swallowfield Road. Doors open at 2pm.

There will be craft stalls selling unique gifts, a Christmas Hamper raffle, guess the weight of a magnificent Christmas cake, a tombola, lots of children's activities and stalls, lovely festive mulled wine and mince pies.

If that is not enough ... Alan's Plants will also be selling potted and cut Christmas trees and plants. You could walk your Christmas Tree home!

This year we will also be holding a Best Christmas Jumper competition for both adults



and children, judged by our best dressed Chair, Jonathan.

You will be able to visit the Nativity Scene in the small chapel at St Richard's, as well as see the beautiful stained glass above the altar in the main hall which is not usually visible. It is very beautiful.

At around 4.15pm CCRA singers will get us into the mood for Christmas with a selection of songs. A real treat at any time of the year but especially at Christmas.

We hope you will support this community event by coming to get presents, enjoy the fun of the activity stalls, get your Christmas Tree and participating in a glass of mulled wine. See you there.

● If you would be interested in having a stall, selling Christmas gifts, then contact Jacqui on 07717742886.



CCRA Singers and friends will be back out on the streets of Central Charlton again this year on **Monday & Tuesday 13 & 14 December**.

We will be raising money for the Greenwich Food Bank. We have decided to adopt a similar arrangement to last year, when instead of knocking on everyone's door, we identified a few locations in the neighbourhood where

we stood and sang for about 20-30 minutes at a time. Despite being rained off on one of our nights last year, we still managed to raise a similar total to previous years, and we hope to do so again this time.

Although the songs are led by the singing group, we like to invite everyone to come along and join us. We will congregate at 26 Wellington

Gardens, leaving promptly at 7pm in order to be ready to start in time at our first location. If you can't be there at the start, or just want to join in when we're near your house, you are welcome to join us at any time at any of the locations. Afterwards there will be refreshments for those who have taken part. For full details of the route and times see page 12.

**\*The editors of Grapevine wish all our readers a very happy Christmas**

# Have your say on what is built in our borough

The Council is consulting on what is called the Site Allocations Local Plan. This is the third and final stage looking at possible development sites across the whole borough.

A significant part of it is about Charlton Riverside but there is also

a small section on what is now the police pound should it ever become vacant.

It is easier to read than many planning applications and you have a chance to tell the planners what you would like to see, whether or not

it's in the document. The consultation finishes on 20 December. Go to [royalgreenwich.gov.uk/haveyoursay](http://royalgreenwich.gov.uk/haveyoursay) and on to consultations.

In the end the final version goes to the Secretary of State next summer.

## Neighbourhood Forum restarts

The Charlton Neighbourhood Forum is over 200 local residents and members of the business community who have come together to improve our environment and have a say in how Charlton develops in the future.

This has never been more important than now as property developers are poised to put in major applications for new homes on the riverside. Hyde Housing plans for nearly 1,300 flats on four different sites (Ref 19/3456/F) are imminent.

Much is higher and more dense than the Masterplan guidelines and about half are one bedroom units, which does little to solve the housing crisis for local families.

Coming out of the pandemic, the Forum is reinvigorated. As we go to press, it is planning to hold its second AGM, which was postponed due to Covid 19. Watch out for details.

The next step is a submission for registration with the Royal Borough of Greenwich. Following accreditation, the Forum can begin work on a Neighbourhood Plan which will give the community a formal 'place at the table' when discussions take place about major changes to our environment.

To join the Forum, visit [charltonneighbourhoodforum.org](http://charltonneighbourhoodforum.org).

## Membership matters

Thank you to all our members who have supported us during 2021. The year started in lockdown again, then we came together as a community in July for the Arts, Crafts and Jumble Trail.

We have created something special in the CCRA, by coming together to support the organisation through membership fees, helping at community events or taking part in our Management Committee, Action or Interest groups. Your commitment is greatly appreciated.

We have also welcomed many new members this year which is fantastic. Thanks for moving here, joining us and sharing a commitment to make us a friendly community neighbourhood.

Membership is normally renewed in January and February. If you are already a member and have completed a membership form in the past two years, you can simply put your fees in an envelope and put through the door of 83 Swallowfield Road, making sure you put your name and address on the front. If you would like to pay online you can. More details of how to do this can be found at [charltonresidents.net](http://charltonresidents.net).

Any difficulties or queries, please email [membership@charltonresidents.net](mailto:membership@charltonresidents.net) or phone Jacqui on 077 1774 2886.

We wish you all a wonderful festive period and hope to see you at the Christmas Fayre on 11 December when we come together again for some seasonal fun.

## St RICHARD'S CHURCH CENTRE

YOUR LOCAL COMMUNITY ASSET  
(corner of Swallowfield Road and Sundorne Road)

## HALL AND MEETING ROOMS FOR HIRE

one-to-one sessions  
group activities • classes  
exhibitions • children's parties

COMPETITIVE RATES  
ONE-OFF or REGULAR BOOKINGS

[info@charlton.church](mailto:info@charlton.church)  
[www.charlton.church](http://www.charlton.church)

## CCRA AGM and Quiz Night

**CCRA's AGM took place on Saturday 9 October, followed by a successful Quiz Night. At the AGM, we elected our Officers and members of our Management Committee for 2021/22. Jonathan Sanders remains as Chair, while Annie Galloway has become Vice-Chair. For a full list of officers and management committee members see the website ([charltonresidents.net](http://charltonresidents.net)). If you have any questions or would like more information, please contact our Chair, Jonathan, at: [chair@charltonresidents.net](mailto:chair@charltonresidents.net) or on 07875 054597.**



Our local historian **Jill Austen** takes a look at Manor House, Lee, once home to the Speaker of the House of Commons

The present Manor House stands on a site previously occupied by a number of other dwellings, including a humble farmhouse and a grand home of a Speaker of the House of Commons.

A William Colman lived on the site of a previous Manor House in 1749. He was an agent for the Pinney family, the wealthiest plantation owners in St Kitts & Nevis, and was a joint plantation owner in Roundhill, Antigua which had 150 slaves.

On his death he left the house and holdings to his nephew, Thomas Lucas, who immediately had it demolished and had another built to the design of Richard Jupp, a renowned architect of the time who also designed Severndroog Castle and the entrance and wings of Guy's Hospital.

Lucas was a merchant trading in London during which time he was a Treasurer then a President of the Board of Governors of Guy's Hospital, a director for the South Sea Company, the Union Society and the Union Fire Service. In 1780 he was recommended to William Pitt the Younger as a potential MP and was subsequently returned as MP for Grampound, Cornwall.

However, his refusal to vote for Fox's East India Bill meant he was later considered as being in opposition to Pitt and in the 1784 election he was left without a seat – never having spoken in the House!

He died later that year and his widow, Elizabeth, married John Julius Angerstein the following year. Elizabeth then sold the house to Francis Baring, founder of the bank that took his name and who had also taken the Grampound seat on the death of Thomas Lucas.

Owning the grand house in Lee, Baring later went on to buy the Manor of Lee and it was then that it officially became known as Manor House.

At this time he was linked with a Nathaniel Clayton as having connections with the Brogue Estate in Montego Bay, Jamaica, possibly as mortgagees, but their names later appear in compensation records for the enslaved people of the estate. At the time of the house sale there were 215 men, women and children enslaved on the estate.

The Baring dynasty continued to live on in the house, the second Sir Francis leased the house to a number of tenants until Sir Francis Thornhill Baring inherited it from him in 1848, with his celebrity status rising as he became Chancellor of the Exchequer.



## TO THE MANOR BORN ...

It's not known how long he lived in the house after he became Lord Northbrook, but during the 1850s there were two tenants: Miss Charlotte Dent then Harry Burrard Farnall who, just as he and his family move to the house, had just been appointed as Metropolitan Inspector for the Poor Law Board.

In 1878 Henry Wolffram opened a 'crammer' school in the building designed to prepare military school candidates for their entrance exams. His intention was that his students

would not just learn strategy and tactics but maths, languages and geography with a variety of sports being especially popular.

Twenty years later, when he decided to move his school to Kensington, there were concerns over the future of the building and the Lee Board of Works applied to the LCC for support in making the grounds for public use and in the upkeep of the building to be used as offices.

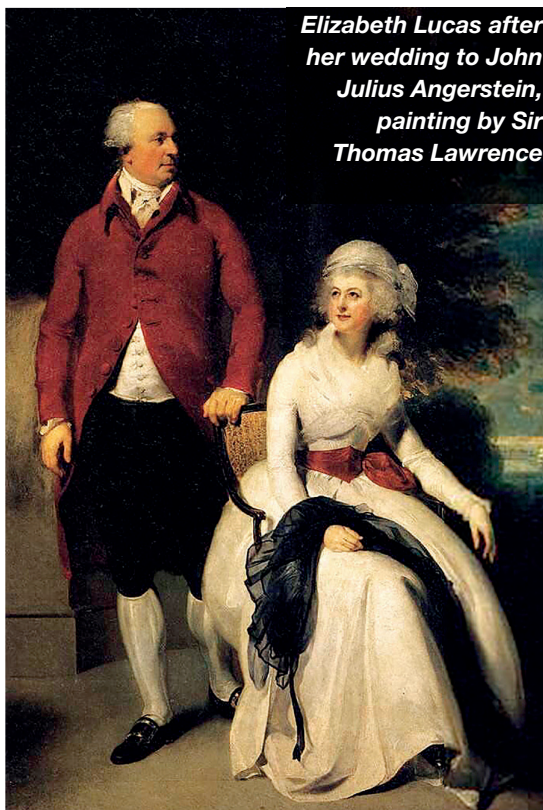
Lord Northbrook made a contribution towards the house and the Board paid for the grounds. The assets were later transferred to the newly formed Metropolitan Borough of Lewisham and a library was opened in 1902.

It is now a listed building along with the boundary wall, entrance gate posts and public phone box in front.

The library is still open and the grounds had a huge restoration to celebrate the centenary

in 2002 which has an ice house, a children's playground, tennis courts, a duck pond, flower garden, sports pitch, dog exercise and dog free areas, a cafe and a new bridge over the River Quaggy.

Take a walk up to Blackheath and over the top down into Lee Green – you'll find entrances off of Old Road, Manor Lane, Brightfield Road or Taunton Road.



# Over the top!

A planning application for two huge advertising boards, one on each side of the flyover on Woolwich Road, has been submitted to the council. (21/3544/A).

Standing on enormous concrete legs, these 22-metre high, double-sided pole mounted digital LED-lit boards would tower over the old fire station and the houses in the area, to be visible to motorists on the flyover. They would dominate the skyline and potentially be a distraction to drivers ... and they may be the first of many!

They would provide a static image but it would change every 10 seconds. Apart from the fact that the flyover underpass does not need more clutter or concrete, the LED boards would add to the light pollution in the night sky.

The number of LED digital signs in Charlton seems to have increased quite significantly over the past few years.

There's the advertising board on the Woolwich Road, next to the fire station, which is so bright it can be seen as you turn the corner from Charlton Church Lane.

Then there are the two enormous WREN signs which attract attention from as far up as Fossdene School, plus the huge IKEA sign, the new signs proposed for Asda and many



Computer generated image from the planning application

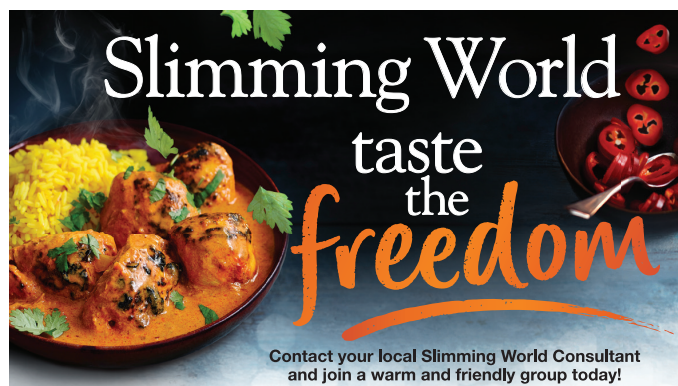
more. While this is very much a retail area, the brightness from these signs does intrude into residential areas. Let's say NO to this planning application, and any others on our roads, that bombard us with yet more advertising to.

## Avoid hangovers

Homeowners have a legal duty to ensure vegetation from their property does not obstruct or cause a nuisance on pavements.

The council can take action against any owner who allows vegetation to grow beyond garden boundaries if it obstructs the pavement or obscures drivers' sightlines.

If their foliage causes an obstruction householders may be contacted by the Council and given 28 days to rectify the problem. If they fail to comply, the Council can arrange to undertake the work and charge the householder.



**Thursday Evenings and Friday Mornings**

St Richard's Church Centre  
Swallowfield Road  
SE7 7NR

**Call Susannah on 07557 235990**

   [slimmingworld.co.uk](https://www.slimmingworld.co.uk)

  
touching hearts, changing lives

## Cuppa with a copper

If you are concerned about anti-social behaviour, burglaries, car crime, or any other aspect of community safety, you will be delighted that Charlton Central Neighbourhood Watch ([ccnwatch.org](http://ccnwatch.org)) is working with Charlton Safer Neighbourhood Policing Team on an initiative called 'Cuppa with a Copper'.

You can get advice at meetings with members of the local Safer Neighbourhood Team. One will take place in Sainsbury's café from 11am on Saturday 11 December.

To join CCNWatch, contact [mail@ccnwatch.org](mailto:mail@ccnwatch.org).

CCNWatch said a stabbing in Delafield Road in October was a targeted attack and that the general public were not in danger.

## New anti-fraud hotline

A new phone number will let you check whether a call purporting to be from your bank or other firms, is genuine.

Stop Scams UK and the Global Cyber Alliance have launched the '159' pilot scheme with backing from major banks and technology firms, including BT and Google.

The hotline is designed to disrupt scammers who pose as banks or other firms to trick customers into sending them money.

How will 'Call 159' work? If someone contacts you saying they are from your bank, asking about financial matters or asking you to transfer money, you can STOP, HANG UP and CALL 159.

A responder will put you through to your bank so you can verify whether it is the bank, or a known firm, that has contacted you. 159 will never call you.

■ Details at [stopscamsuk.org.uk/159](https://stopscamsuk.org.uk/159).



# the **GREEN** page

## Keeping the Green in Greenwich – it's not just a walk in the park



A review of 'how society supports people to access and engage with the outdoors' has been set up by the Treasury, headed by Lord Agnew, a minister in the cabinet office.

It is concerned with green space in urban areas as well as in the countryside and is partly motivated by a growing recognition of how important even just going for a walk in the park can be to our health and wellbeing, particularly our mental health.

In Greenwich we are much better off than many parts of London. Local campaigners saved public access in places like Plumstead Common; objecting to more and more of the common being built on: riots in 1876 finally led to the Plumstead Common Act and 100 acres remaining as common land 'forever'.

In the early 1930s a forward-looking London County Council purchased swathes of land from Lesnes Abbey Woods in the east, across Bostall Heath and Woods to Oxleas meadow and the surrounding woods and gradually opened them up to the public.

As late as 1938 they bought Eltham Common linking across Shooters Hill Road to Woolwich Common (still owned by the Army but overseen by the council) and Charlton Park, Blackheath and Greenwich Park, the very first royal park, open to the public since the eighteenth century.

For an inner-city borough that adds up to quite an inheritance.

What has happened more recently? Finally, there is a joined-up Thames path along the 14 miles of Greenwich riverside, much of which was either not there at all or closed off and slipping into the river 40 years ago. What green space there is on the peninsula was planted before the millennium.

These were important long-term decisions. But, since then, what has happened on the riverside sites has provided thousands of new housing units, as the developers call them, but motivated by short term profit.

They have no serious interest in

***Will our grandchildren be able to rejoice at the legacy we leave them along the Greenwich riverside?***

providing significant green and open space or new woodland; a few shrubs and tiny play space is standard, increasing to a pocket park if a 38-storey skyscraper is permitted.

What is being created will not be good for health and wellbeing. The way things are going, the many tens of thousands of people living in the new high-rise world along the river, between Deptford and Woolwich, will be hugely deficient of green space, wild flowers and wild life, large trees or even space for kids to kick a football around. And

there won't be many gardens!

If it was solving the local housing crisis it would be more justified; but it isn't. Developers try to keep the percentage of affordable properties as low as possible and, after getting planning permission, plead some change in the market makes it unviable.

And 'affordable' is not affordable to most of the tens of thousands on the council's waiting list.

We know the importance of getting out into the open air for good health, especially for children, but even nurseries are being planned without space to do just that.

Locally, our new council ward, Charlton Village and Riverside, stretches down to the river. When we elect new councillors next year, we should be looking for people who will give this issue a top priority.

At the very least, we should be looking for a sizeable new park, some major tree planting and plenty of safe green access to the Thames path at the northern end of our new ward.

The council is under huge pressures to allow more a housing, even though it is not meeting local need. They also have growing responsibilities to create a healthy and sustainable environment. but few resources to achieve this.

Will they be forward looking? Will our grandchildren at the end of this century be able to rejoice at the legacy we leave them along the Greenwich riverside?

# A voyage through time

Charlton resident Patricia Hann, shown here (on the right) with her dear friend, Audrey, reflects on her passion for poetry and what it's like to be published at the age of 97!

Patricia Hann's lifelong fascination for reading and writing poetry developed as a small child when her mother introduced her to its charms. And that was nearly 100 years ago!

When she was a child in primary school, inspired by little poems she came across, she says she used to write poems for the teachers she liked, especially if one of them got married.

Once she arrived at Barking Abbey Grammar School, Scottish ballads, Wordsworth, Coleridge and Tennyson were added to the list and her homework included memorising Milton's and Wordsworth's sonnets.

Now, 97, Patricia, from Elliscombe Road, is celebrating publication of the book of her outstanding, enthralling poems, *Voyaging Through Time*, written throughout her life, and dedicated to the memory of 'Audrey Judge and the friendship of a lifetime'. Her dearly beloved friend of 60 years, who lived in Sundorne Road, died in 2020.

Patricia told me: "I thought after Audrey died I couldn't write at all and I was longing to write a poem about my feelings because I thought it would tame them a bit."

However, she has included three birthday poems written for Audrey, including the final one she had written in February for her friend's birthday in May, but she died at the end of April, so never received it.

Audrey, a teacher and talented artist, painted a picture for each of Patricia's birthdays, many of which are displayed around her house. And, fittingly, the cover for Patricia's poetry book is a stunning woodcut by Audrey.

Patricia, born in 1924, was obviously affected by World War II, as all lives were, but the war which began in September 1939, when she was 15 and ended in September 1945, when

she was 21, seemed to leave her relatively unscathed.

The first major change happened on the morning of Sunday, 3 September, when it was deemed likely that Britain would enter the war.

All children whose parents were letting them leave as evacuees with their schools, were lined up in the school grounds and registered, each carrying a packed suitcase and a packed lunch. No drinks were allowed – a sensible precaution, says Patricia, for what would be a crowded train journey. She adds, as an aside, that the chemistry master, who had brought his family, decided that the rule did not apply to him.

She says: "We waited until – around 11am – when Neville Chamberlain announced that we had declared war on Germany, and this was received

---

*'It was a wonderful life and I would never have had it if it hadn't been for the war!'*

---

over the wireless. Then each school accessed its own instructions for a journey to an unannounced destination, with a chance for parents to come and say 'Goodbye', if they could get there before we set out.

"It was not until nearly the end of the journey that a rumour circulated that we were bound for Weston-super-Mare.

"There we were received into schools, probably given refreshments – I don't remember – and allotted to our hosts for at least that night."

Patricia's younger sister, Muriel, was at a different school, so ended up in Beccles in Suffolk which, Patricia says, she loved. Patricia says: "Weston-super-Mare was lovely and the government

paid – I think it was 10 shillings a week – to the hosts for each evacuee, and some people were only too glad to have evacuees to help with their income."

The evacuees shared the local high school with its existing pupils, who had the morning session, while the newcomers had the afternoon session with their own teachers, which worked well and meant if they didn't have homework to do they could go for walks round Weston-super-Mare which, Patricia says, was wonderful.

The war deprived her of being able to teach German, one of her favourite subjects, when the Jewish German woman who taught her class – a refugee from Germany – was interned as a supposed threat to the country.

That aside, the war opened up other, wider opportunities, she says, because she was awarded an 'exhibition' (a sort of scholarship) linked to her becoming a teacher, to pay for her keep. Without it, her parents could not have afforded to pay for her years at college.

She was enrolled at Queen Mary College, part of London University, to study English Literature. Owing to the war, it was based in Cambridge when Patricia was an undergraduate and the students were sometimes allowed to go to the Cambridge University lectures.

She adds: "It was a wonderful life and I would never have had it if it hadn't been for the war!"

As an undergraduate during the war, Patricia supported herself through a variety of jobs in the holidays: in local cafés as a waitress, for instance, and as a fire-watcher in the Cambridge Colleges, where 'you slept on a camp bed and someone who was awake would rouse you as soon as bombs kept falling, or something like that'."

She had no teacher training after graduating, therefore could not teach in







a state school, so for a couple of years she taught in a private school before applying for a 'more official job' at a high school in Dalston. But when she saw what was on offer, she was relieved when she did not get the job.

However, some time after the interview she received a letter from a nun, saying their English teacher had gone to Dalston and the headmistress, who had interviewed Patricia, thought she might be a suitable candidate.

Patricia says: "I was not a Catholic by any means, but I thought a nun's school would be more manageable, so I went there. And Audrey, who was not a Catholic either, was there, and that's where we met.

"We both worked there for a time, then I went on to various public schools, which I could manage better. I didn't have the strength – kids at the convent were not ladies by any means, but they were managed in a way."

She adds: "Another chance thing – when Audrey and I first knew each other we were in digs, I was living in Belsize in a room that was hardly bigger than a broom cupboard and she was living in West Hampstead.

"It just so happened my mother had a friend who was leaving a tiny top floor flat who suggested I might like to take it. I got this flat, which happened to be very near Audrey's house, so we travelled to work together and collaborated on school plays, then when I left and got jobs in public schools round the country, we wrote to each other practically every day, or if we didn't write I'd go out to a phone box and phone her.

"She was very witty, and as well as ornamenting her letters with drawings –

*'We went shopping and to art exhibitions together for the last 37 years'*

cats mainly – she made a lovely picture of my dog, Max, a dachshund, who I think was a bit ill at the time, pretending to be asleep, to avoid being medicated and there's one of her cats with a nurse's cap on!"

Her last school was Christ's Hospital in Hertford, where she taught for a dozen years or more.

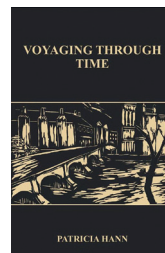
When she got to retirement age and house prices were rising rapidly, she knew if she wanted to get a house in London to be near Audrey in Charlton,

she would have to move swiftly.

When she found her current house in Elliscombe Road it needed a lot of repair work so she managed to negotiate an affordable deal. When she first moved in and noticed the pollution in the air compared with her airy house in Hertford, she says she was not sure she had done the right thing. But, she says: "I certainly was as time went on because, although it was easy in those earlier days for Audrey and me to go off between Hertford and London to see each other, as we got older and older, being near to each other was more and more important and it was wonderful being so near her.

"We went shopping and to art exhibitions together for the last 37 years."

Patricia says: "The dedication of this book to Audrey was my reason for compiling it, but the book contains a broad selection of poems written throughout a lifetime, on varying subjects and in varying modes, and of course, in a close 60-year-long friendship, Audrey appears in some of them."



*Voyaging Through Time* (paperback) by Patricia Hann is available online from Amazon and online or in store from Waterstones at £5.99. Publisher: Bookpublishingworld ISBN: 9781838496708

## GRAPEVINE

Comments, feedback, queries or material for the next edition of *Grapevine* should be emailed to [grapevine@charltonresidents.net](mailto:grapevine@charltonresidents.net) by Monday 10 January. Alternatively, phone Joy Ogden on 020 8293 3034 or Bob Smith on 020 8853 2697. *Grapevine* reaches 900 homes and retail outlets, in our designated area and beyond.

To advertise, contact [grapevine@charltonresidents.net](mailto:grapevine@charltonresidents.net). Rates for individuals and small businesses: small ads up to 15 words plus contact details: £10 for 1 issue, £30 for four. Panel ads single column 8cm x 8cm: £40 for 1-4 issues, £35 for 5+. Other sizes please enquire. Check your local noticeboard, the next *Grapevine*, our website (please note new address [charltonresidents.net](http://charltonresidents.net)); Twitter (@ccra\_se7) and Facebook ([facebook.com/centralcharlton](https://www.facebook.com/centralcharlton)) for details of CCRA events.

## The Old Cottage Coffee Shop

*A traditional tea shop serving high quality tea, coffee and snacks*

*Open every day from 10am in Charlton Park*



*Closes 4pm in winter and 5pm in summer*





**Michael John**

Branch Manager and Partner Conran Charlton

## YOUR NEW FAMILY HOME

At some point, most young families will envision moving out of their current home to upsize to a bigger home when they have another child/children. You may even be a couple expecting your first child, looking to move out of your one-bedroom flat for more space. However, choosing the right home can be difficult and there is also the question of do you make a 'stepping-stone' move that suits you well now, or bite the bullet and buy a larger home if you envision having more children later down the line? Finances will be key; you could look at finding a home that fits now (with room to extend/move out again when you feel you're ready to upsize again) or opt for a larger home which is future proof.

So, what other considerations are there? Think carefully about the layout. For example, does your family prefer open plan living for social living and convenience? But what about the noise and occasional need for separation? What storage space do you need?

Then there is the location; you'll want to check the schools in the area and the catchment areas they are in; many catchment areas are tiny making it challenging to find a home within, so this should be checked beforehand. You should also check the location for transport links, shops, restaurants, green spaces etc.

Finances are a huge consideration. Are you a family on one income? Is this a struggle or are you still financially stable? Have you considered a bridging loan to help 'bridge' the financial gap between selling your old home and buying a new one? Whatever your situation, speaking with an independent mortgage advisor is strongly recommended to see what you can afford beforehand, and what finance would suit you best. Do call myself for moving advice, or Jeff Lever in our Mortgages department to explore financing.

You have exciting times ahead. Good luck!

BROCKLEY | FOREST HILL  
CHARLTON | WESTCOMBE PARK  
LEE | ELTHAM  
GREENWICH | BLACKHEATH  
ASSOCIATED PARK LANE OFFICE  
LAND AND NEW HOMES  
LETTINGS MANAGEMENT DEPT  
MORTGAGE ARRANGING DEPT  
**conranestates.co.uk**

020 8629 8164  
020 8293 0454  
020 8378 5450  
020 8312 8312  
020 7409 4693  
020 8658 4642  
020 8312 8316  
0800 6893 173

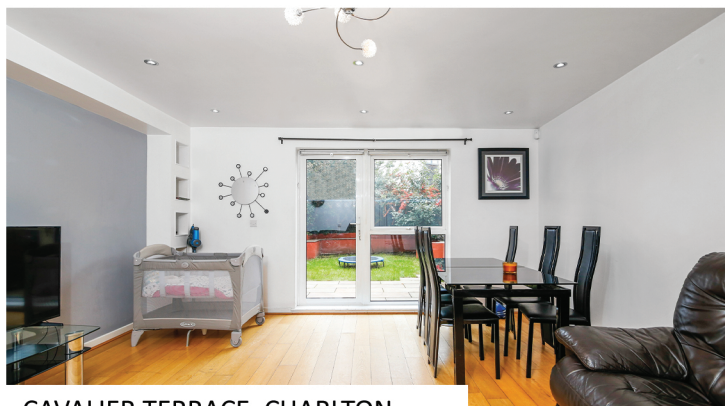
**conran**  
a refreshing change



**CHARLTON LANE, CHARLTON**

OFFERS OVER £725,000

A special home in a special road with a fantastic westerly facing rear garden outside and fabulous space inside. EPC: E



**CAVALIER TERRACE, CHARLTON**

ASKING PRICE £575,000

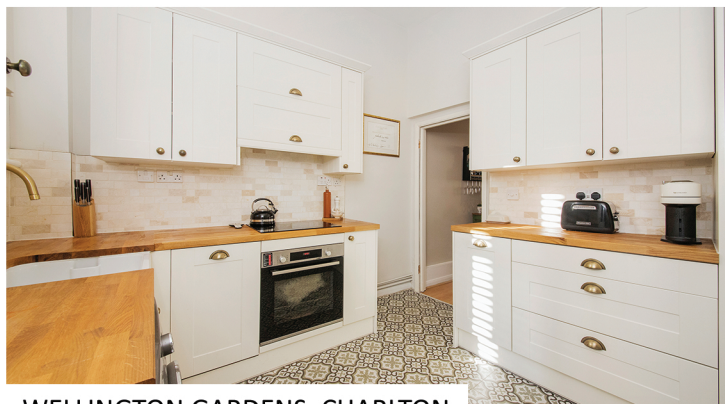
This immaculate three storey modern house has very flexible living space and fantastic City views from the top floor main bedroom! EPC: B



**NIGHTINGALE PLACE, WOOLWICH**

ASKING PRICE £600,000

A super and rare Victorian semi close to the town centre – simply a country home that just happened to have found itself visiting London and decided to stay! EPC: D



**WELLINGTON GARDENS, CHARLTON**

OFFERS OVER £399,995

Full of quirkiness and charm, this is a unique split-level apartment with high ceilings, large windows, interestingly shaped spaces, and not forgetting the two courtyard gardens too! EPC: D





## NADINE STREET, CHARLTON

GUIDE PRICE £900,000 - £925,000

"We have lived in Nadine Street for more than 11 years and have really loved living here. We were drawn by how quiet the road is, but also how close it is to walk to the train station, parks and shops.

We have done a lot of improvements over the last five years as our family has grown. Firstly, a loft conversion which now provides a beautiful master bedroom with an en-suite shower room as well as another bedroom which has, during the recent difficult times, provided a fantastic space for a home office. We have also recently done a side return extension, to create the kitchen diner / living area, where we spend most of our time,

especially when the weather is nice, and we can open the large bi-fold doors onto the garden. It's such a great family home and we are so sad to leave."

As the sellers say, this is such an ideal family home, and we completely agree! With extended living space, four large bedrooms, two bathrooms (and three toilets) there is tremendous room to grow into.

Highly recommended!

EPC: D





# How happy is my valley?

... A view from the terraces

## Cometh the hour, cometh the man

There's just one big question on the minds of Charlton football fans: will iconic ex-captain Johnnie Jackson be confirmed as the club's new manager? Already assistant manager, he stepped in when Nigel Adkins got his marching orders after overseeing a season that began with just two wins in 13 – one of the worst starts in the club's history.

Then we were 22nd, deep in the relegation zone and struggling to find any way forward.

Jackson's first match as caretaker boss was away to Sunderland, who at that time were in the top four and boasted a 100 per cent home record. A tough battle saw us grind out a 1-0 win (well, we are their bogey team) and return to South East London with a new determination. Now, with five games unbeaten under the 39-year-old's stewardship, Charlton are 18th and looking positively towards the rest of the season.

Quite what went wrong under Adkins is difficult to define. He took over when Lee Bowyer was lured away to Birmingham last March.

Jackson took over for one match and chalked up a home win against Bristol Rovers. Then Adkins took over the reins.

He made quite an impact, losing only one game in the last 10 and missing the play-offs by a whisker. Everything

was looking good. New players were brought in to strengthen the squad, others were let go and by the time pre-season friendlies were being played we had a solid group of footballers that looked like serious contenders for promotion.

But it didn't happen. Nothing seemed to gel and defeat followed defeat. Eventually players and fans lost patience with Adkins and the writing was on the wall. The atmosphere in the dressing room was reported as toxic and when we lost 3-2 at home to a bruising Accrington side it was the end.

In came Johnnie Jackson. His first move was to talk to his senior players. The general feeling was more clarity was needed and simpler messages. Straight away, Johnnie adopted a higher press and demanded a higher output. He got that. He brought George Dobson back into the side, a player who couldn't even get on the bench under Adkins. And Dobson injects speed and ingenuity into the middle of the park as well as infusing the team with self-belief. There is no doubt about the upbeat feel down at the Valley at the moment.

Does Jackson want the job full time? You bet he does and he makes no secret of it. The results speak for themselves. "I've tried to put smiles back on faces," he says.

One of those faces is that of owner Thomas Sandgaard who says he is prepared to give Jackson a chance and hopes the good form continues. Rumour has it that Sandgaard has several names in the offing but is not looking to call anyone all the while we continue to climb up the table.

And the bookies confirm Jackson as front-runner, his odds currently stand at 4/6. Others in the frame are ex Charlton player and manager Chris Powell, former Sheffield United boss Chris Wilder, Chris Coleman and Mick McCarthy.

The criteria set by Sandgaard are straightforward: premiership and Europe within a decade. At the moment, sitting 17th in league one, that seems a very distant prospect but you have to start the journey somewhere. Given the rocky road so far, it makes sense that Sandgaard has stated his intention to be more hands on with the day-to-day football at the club.

There are already some encouraging signs. Academy players are coming through the ranks and showing pedigree. Mason Burstow came on late in the FA Cup match against Havant at the Valley on 6 November and stunned the home crowd with a superb strike. He looks a very exciting prospect. With Jayden Stockley already having chalked up 11 goals in all competitions this season and strong support from Washington and Leko, the prospects are definitely looking better. Winger Corey Blackett-Taylor is now a regular in the first team squad and his speed and agility give extra width and potential to our frontline attack. Dobson continues to play a vital midfield role and hopefully he will soon get support from Jake Forster-Caskey, back in training after long-term injury.

At the moment we are just one point above the drop zone and eleven points from a play-offs place. So it's all to play for, hopefully with "Jacko" at the helm.

Crongers fished. COYR's!

# LUKAS BOZIK

## massage therapy

release your body release your mind

I am a holistic mobile massage therapist based in South East London but happy to travel. I will come right to your home for a releasing, relaxing and stimulating treatment tailored to fit your needs. In my massage I combine the techniques of deep tissue, Swedish holistic massage, stretch massage and Indian head massage. The last one also works great separately as a seated treatment and can be conveniently done in an office, at events or as a pampering for a group of friends.

FULL-BODY TREATMENT	INDIAN HEAD MASSAGE
DEEP TISSUE / RELAXING / ENERGIZING / STRETCH	HEAD, NECK, SHOULDERS & FACE
Single booking	Seated chair massage*
60min ..... £60	15min ..... £10
90min ..... £80	30min ..... £20
120min ..... £100	45min ..... £30
	60min ..... £40
Couples booking deal	*minimum booking time is 1 hour per session
2x60min ..... £110	tel: 07593 550 193
2x90min ..... £150	insta/fb @lukasbozikmassagetherapy
2x120min ..... £190	lukasbozikmassagetherapy@gmail.com

EVERY 10TH TREATMENT IS FREE

PERFORMERS & HOSPITALITY EMPLOYEES GET 10% OFF  
BUY 3 TREATMENTS, GET 4TH TREATMENT HALF PRICE  
REFER A FRIEND, GET 20% OFF YOUR NEXT TREATMENT



# On the Grapevine ...

## On the Move

Could 2022 be the year you keep that New Year's Resolution and take more exercise? CCRA's popular exercise class for those who want gentle toning and strengthening continues to thrive. The classes take place in St Richard's Hall every Monday morning. Whatever your level of fitness you would benefit from our workouts. Our skilled instructor Joanne keeps us on our toes, and provides chair-based alternatives so that all abilities are catered for. Classes are booked in advance. Each six-week block costs £36 and includes hall hire, instructor's fees and refreshments. If you would like to be put on our waiting list, drop an email to [brendataggart49@gmail.com](mailto:brendataggart49@gmail.com).

## Knit and natter

Now that the cold weather is setting in – what could be cosier than snuggling up with some knitting in front of a box set?? If you'd like to learn to knit or if you are an experienced knitter then you are welcome to join our group. Bring along your own project or help with some charity knitting. We are currently knitting Christmas gifts for the QE neo-natal unit and fiddle-muffs for the London Ambulance Service. Come along to St Richard's Hall, Swallowfield Road – 2pm to 4pm on Tuesdays: 21 December, 25 January, 22 February and 29 March. Great knitting and we can guarantee an excellent cuppa.

## Singing Group

We have been continuing our face-to-face sessions since the summer, out of doors while the weather permitted, but now indoors for the winter, though we keep the room well ventilated. We will be singing at the end of the CCRA Christmas Fayre on Saturday 11 December. This will be followed by two evenings of carol singing in the neighbourhood, on Monday & Tuesday 13 & 14 December, collecting for the Greenwich Food Bank. Full details can be found on pages 1 and 12. Please

join us to make them vibrant community events. If you are interested in joining the group in the new year on a regular basis, please contact Chris on 020 8858 7377.

## Music group 'SE7'

After a long period of enforced silence, our group is getting together again and will be playing at Cattleya on Sunday, 28 November – the first of many regular sessions, we hope. We'll be playing our usual mix of jazz and world musics with the addition of a few new tunes. We are always interested in gaining new members, whatever your instrument or level of experience, and reading music is not essential. If you are interested in joining the group, please contact Chris on 020 8858 7377.

## Playing out

As the winter nights draw in we have only one more session before Christmas. Families are welcome to join us in Sundorne Road on Wednesday 8 December – 3.30pm to 5.30pm. Wrap up warm. Weather permitting we will resume on 12 January. Subsequent dates are 26 January; 9, 23 February; 9, 23 March; 6 April. Do you have two hours to spare to help steward the scheme? We can only run sessions if we have enough volunteers and having a larger pool makes organising the sessions so much easier. Contact [playingoutse7@gmail.com](mailto:playingoutse7@gmail.com) to find out more.

## Walking group

Monthly walks are well established again. August's walk was local but the weather was very disappointing! September was kinder as we explored Brookmill Park with its 300 year-old plane tree (amongst many others), wildlife, gardens and history. We followed the route of the Ravensbourne down to the Thames at Deptford Creek. In October we ventured to north London to the beautiful Hampstead Pergola and

the Hill Garden. It is on different levels reached by winding iron staircases and built of brick, almost forming a maze with all its twists and turns: one view from the top looks towards Harrow and others offer treetop views of the approaching autumn. If you would like information about future walks please email Jill on [jillmo@btinternet.com](mailto:jillmo@btinternet.com)

## Book Group

We're feeling our way tentatively into face-to-face meetings, but we still have some members who prefer Zoom – whoever thought we'd hear that! We had a good conversation recently about *The Vanishing Half* by Brit Bennett. In November we revisit one of our well-liked authors in Ann Patchett's *State of Wonder*, which is set in the Brazilian Rio Negro and involves research for a pharmaceutical company. Our December choice is *Burial Rites* by Hannah Kent which is set in Iceland in the early part of the nineteenth century. A district officer, his wife and two daughters are required to house a convicted murderer, Agnes. Agnes's story slowly emerges and not all is as it appeared.

## Community Gardens

Have you noticed the changes at Charlton Station? Thanks to the local commuters who voted that the Charlton allocation of Thameslink Govia's Passenger Benefit Fund should be spent on landscaping, we were offered £2,000 to invest in the station. The new additions include two raised beds, made of railway sleepers, and planted with drought-resistant plants. Men in Sheds built a raised bed at the bus stop end of the garden for herbs. The plane tree and silver birch have been professionally pruned and the wall against the street cleaned and repainted. If you would like to learn more about gardening or share your knowledge, please consider volunteering to join us. Contact us through the website [charltoncommunitygardens@gmail.com](mailto:charltoncommunitygardens@gmail.com)

## Dates for your diary

### Saturday 11 December

Christmas Fayre

St Richard's Hall, Swallowfield Road

Doors open at 2pm; singing at 4.15pm



### Monday 13 December

Carol singing

Assemble at 7pm at 26 Wellington Gardens

or join us at one of the following locations:

7.10 Junction of Wellington Gardens/Elliscombe Road

7.40 Nadine Street, midway on the bend

8.10 Elliscombe Road

entrance to Coombe Lodge/Warren Walk

To be followed by refreshments for singers

### Tuesday 14 December

Carol singing

Assemble at 7pm at 26 Wellington Gardens

or join us at one of the following locations:

7.10 Corner of Priolo Road/Sundorne Road

7.40 Swallowfield Road, outside St

Richard's Hall

8.10 Corner of Delafield Road/Inverine Road

To be followed by refreshments for singers



## THUMBS UP



A big thumbs up for the road resurfacing in Wellington Gardens – the envy of all other neighbourhood streets!

## THUMBS DOWN!



A big thumbs down to everyone who continues to park on the double yellow lines outside Charlton Station. The restriction was tightened to prevent congestion – but it just seems to get worse. Spare a thought for others and park off the main road.

**Contributions to this column welcome!**

## Toy Library needs your help

Generations of central Charlton children have used the services of Charlton Toy Library. But now it needs help. If you could help in any of the roles below, please contact the co-ordinator Vicky Thomas on 020 8319 0055 or email her at [info@charltontoylibrary.org.uk](mailto:info@charltontoylibrary.org.uk).

- Stay and play session assistant volunteer
- Fundraising and promotions volunteer
- Storytelling volunteer



GREENGROCER



LOCAL BAKERY



REFILLS

MONDAY TO SATURDAY 9-5PM, SUNDAY 10-4PM

020 8319 8611



HIGH STREET RETAILER OF THE YEAR 2020

CCRA

**Charlton Central Residents Association**